



中国认可  
国际互认  
检测  
TESTING  
CNAS L0095

Page 1 of 83 Pages

TEST REPORT

No.: RZRS2017-0223

Client : Hamilton Beach Brands, Inc  
Address: 4421 Waterfront Drive Glen Allen, VA 23060

Receiving Date : May 09, 2017      Completing Date : June 29, 2017

Test Sample : Blender      Type/Model : HBF600\*-YYY (\* is blank or 1-2 characters to represent the customer, YYY is 2-3 characters to represent the country or region.)

Cover Model : —

Test Items : The content of Lead, Cadmium, Mercury, Hexavalent Chromium, PBBs, PBDEs

Test Method : IEC 62321-2:2013, IEC 62321-3-1:2013, IEC 62321-7-1:2015

Test Conclusion :	According as	Conclusion
	Directive 2011/65/EU (RoHS)	Pass

Qing Meng

Xiao li

Xia Qingyun

Tested by: *Qing Meng*

Reviewed by: *Xiao Li*

Approved by: *Xia Qingyun*

Date of issue: 2017-06-29

Seal of CVC



威凯检测技术有限公司 检验检测专用章

<b>List of Apparatus</b>					
No.	Test Instrument	Type	Number	Period of Calibration Validity	Used (√)
1.	X-ray fluorescence spectrometer	NDA 300	VGDY-0219	2016.07.11-2017.07.10	√
2.	Analytical Balance	XS204	VGDR-0127	2017.04.14-2018.04.13	√
3.	Ultraviolet Spectrophotometer	Perkin Elmer Lambda 35	JB-0036	2017.04.21-2018.04.20	√

## Material list

Table 1

Component No.	Component name	Specimen No.	Specimen name
1	User manual	1	User manual
2	Filler cap	2	Filler cap
3	Jar lid	3	Jar lid
4	Container	4-1	Container-Transparent plastic
		4-2	Container-Black coating
5	Stirring knife 1	5-1	Stirring knife 1-Substrate of locking ring
		5-2	Stirring knife 1-Plating of locking ring
		5-3	Stirring knife 1-Substrate of hex nut
		5-4	Stirring knife 1-Plating of hex nut
		5-5	Stirring knife 1-Substrate of hex nut
		5-6	Stirring knife 1-Plating of hex nut
		5-7	Stirring knife 1-Metal blade
		5-8	Stirring knife 1-Metal blade support washer
		5-9	Stirring knife 1-Metal permanent seat
		5-10	Stirring knife 1-Metal bearing
		5-11	Stirring knife 1-Washer of white plastic
6	Stirring knife 2	6-1	Stirring knife 2-Substrate of locking ring
		6-2	Stirring knife 2-Plating of locking ring
		6-3	Stirring knife 2-Substrate of hex nut
		6-4	Stirring knife 2-Plating of hex nut
		6-5	Stirring knife 2-Substrate of hex nut
		6-6	Stirring knife 2-Plating of hex nut
		6-7	Stirring knife 2-Metal blade

Component No.	Component name	Specimen No.	Specimen name
		6-8	Stirring knife 2-Metal blad support washer
		6-9	Stirring knife 2-Metal permanent seat
		6-10	Stirring knife 2-Metal bearing
		6-11	Stirring knife 2-Washer of white plastic
7	Container	7-1	Container-Substrate of stainless steel
		7-2	Container-Black plastic
8	Jar pad	8	Jar pad
9	Metab	9	Metab
10	Jar pad	10	Jar pad
11	Upper housing	11-1	Upper housing-Black plastic
		11-2	Upper housing-HB badge
		11-3	Upper housing-Hot melt glue
12	Lower housing	12-1	Lower housing-Black plastic
		12-2	Lower housing-Tags
		12-3	Lower housing-Nameplate
		12-4	Rubber foot-black plastic
13	Moto shell	13	Moto shell
14	Operation panel tags	14	Operation panel tags
15	Flexible PCB	15-1	Flexible PCB-Flexible PCB
		15-2	Flexible PCB-Black plastic
		15-3	Black connector-metal
		15-4	Flexible PCB-Tags
16	Knob	16-1	Knob-Black plastic
		16-2	Knob-White coating
17	Seal ring	17	Seal ring
18	Plastics 1	18	Plastics 1
19	Plastics 2	19	Plastics 2
20	Socket coupler	20-1	Socket coupler-Black plastic

Component No.	Component name	Specimen No.	Specimen name
		20-2	Coupler-Substrate of plug
		20-3	Coupler-Plating of plug
21	Fixed metal ring	21-1	Fixed metal ring-Substrate of fixed metal ring
		21-2	Fixed metal ring-Plating of fixed metal ring
22	Transparent plastic sheet	22	Transparent plastic sheet
23	Power switch controller	23-1	Power switch controller-Black plastic 1
		23-2	Power switch controller-Indicator light
		23-3	Power switch controller-Soldering tin
		23-4	Power switch controller-Pin
		23-5	Power switch controller-Substrate of spring 1
		23-6	Power switch controller-Plating of spring 1
		23-7	Power switch controller-Substrate of spring 2
		23-8	Power switch controller-Plating of spring 2
		23-9	Power switch controller-Substrate of metal insert 1
		23-10	Power switch controller-Plating of metal insert 1
		23-11	Power switch controller-Contact 1
		23-12	Power switch controller-Substrate of metal insert 2
		23-13	Power switch controller-Plating of metal insert 2
		23-14	Power switch controller-Substrate of metal insert 3
		23-15	Power switch controller-Plating of metal insert 3
		23-16	Power switch controller-Contact 2

Component No.	Component name	Specimen No.	Specimen name
		23-17	Power switch controller-Metal bar
		23-18	Power switch controller-Fuse
		23-19	Power switch controller-Red plastic
		23-20	Power switch controller-Black plastic 2
		23-21	Power switch controller-Metal connector
24	PCB 1	24-1	PCB 1-Material
		24-2	PCB 1-Green paint
		24-3	PCB 1-Soldering tin
		24-4	PCB 1-Pin
		24-5	PCB 1-Substrate of insert
		24-6	PCB 1-Plating of insert
		24-7	White plug in terminal block 1-white plastic
		24-8	White plug in terminal block 2-white plastic
		24-9	PCB 1-White size
		24-10	PCB 1-Tags
		24-11	PCB 1-Rectifier
		24-12	Washer-black plastic
		24-13	PCB 1-Substrate of screw 1
		24-14	PCB 1-Plating of screw 1
		24-15	PCB 1-Substrate of screw 2
		24-16	PCB 1-Plating of screw 2
		24-17	PCB 1-Substrate of gasket 1
		24-18	PCB 1-Plating of gasket 1
		24-19	PCB 1-Substrate of gasket 2
		24-20	PCB 1-Plating of gasket 2
		24-21	PCB 1-Resistance 1
		24-22	PCB 1-Glass sealed diode

Component No.	Component name	Specimen No.	Specimen name
		24-23	PCB 1-Audion
		24-24	PCB 1-Capacitance 1
		24-25	PCB 1-Radiator
		24-26	Relay-black plastic shell
		24-27	Relay-copper wire
		24-28	Relay-white plastic
		24-29	Relay-copper sheet 1
		24-30	Relay-contact 1
		24-31	Relay-metal sheet 1
		24-32	Relay-metal sheet 2
		24-33	Relay-metal sheet 3
		24-34	Relay-coil former
		24-35	Yellow capacitance-host
		24-36	Yellow capacitance-filler
		24-37	Yellow capacitance-shell
		25	PCB 2
25-2	PCB 2-Green paint		
25-3	PCB 2-Soldering tin		
25-4	PCB 2-Pin		
25-5	PCB 2-Substrate of insert		
25-6	PCB 2-Plating of insert		
25-7	White plug in terminal block 1-white plastic		
25-8	White plug in terminal block 2-white plastic		
25-9	Black plug in terminal block 1-black plastic		
25-10	Black plug in terminal block 2-black plastic		
25-11	PCB 2-White size		
25-12	Washer-black plastic		
25-13	PCB 2-Radiator		

Component No.	Component name	Specimen No.	Specimen name
		25-14	Capacitance 1-black plastic jacket
		25-15	Capacitance 1-metal shell
		25-16	Capacitance 1-pin
		25-17	Capacitance 1-host
		25-18	Capacitance 1-black plastic rubber plug
		25-19	Capacitance 2-black plastic jacket
		25-20	Capacitance 2-metal shell
		25-21	Capacitance 2-pin
		25-22	Capacitance 2-host
		25-23	Capacitance 2-black plastic rubber plug
		25-24	Capacitance 3-black plastic jacket
		25-25	Capacitance 3-metal shell
		25-26	Capacitance 3-pin
		25-27	Capacitance 3-host
		25-28	Capacitance 3-black plastic rubber plug
		25-29	Yellow capacitance 1-host
		25-30	Yellow capacitance 1-filler
		25-31	Yellow capacitance 1-shell
		25-32	Yellow capacitance 2-host
		25-33	Yellow capacitance 2-filler
		25-34	Yellow capacitance 2-shell
		25-35	Yellow capacitance 3-host
		25-36	Yellow capacitance 3-filler
		25-37	Yellow capacitance 3-shell
		25-38	Yellow capacitance 3-tags
		25-39	Coil-PCB
		25-40	Coil-copper wire



Component No.	Component name	Specimen No.	Specimen name
		25-41	Coil-coil
		25-42	PCB 2-Resistance 1
		25-43	PCB 2-Chip
		25-44	PCB 2-Audion
		25-45	PCB 2-Diode 1
		25-46	PCB 2-Diode 2
		25-47	Transformer-black plastic
		25-48	Transformer-yellow tags
		25-49	Transformer-coil former
		25-50	Transformer-electric component
		25-51	Transformer-nameplate
		25-52	Transformer-silicon steel sheet
		25-53	Transformer-copper wire
		25-54	Transformer fixed cap-black plastic
		25-55	PCB-material
		25-56	PCB-green paint
		25-57	PCB-soldering tin
		25-58	PCB-pin
		25-59	PCB-LED
		25-60	PCB 2-Substrate of screw 1
		25-61	PCB 2-Plating of screw 1
		25-62	PCB 2-Substrate of screw 2
		25-63	PCB 2-Plating of screw 2
		25-64	PCB 2-Substrate of gasket 1
		25-65	PCB 2-Plating of gasket 1
		25-66	PCB 2-Substrate of gasket 2
		25-67	PCB 2-Plating of gasket 2
		25-68	PCB 2-Substrate of nut
		25-69	PCB 2-Plating of nut

Component No.	Component name	Specimen No.	Specimen name
26	Moto	26-1	Fixed mount-metal mount
		26-2	Fixed mount-brown plastic
		26-3	Fixed mount-black plastic washer
		26-4	Fixed mount-metal cap
		26-5	Fixed mount-Substrate of spring
		26-6	Fixed mount-Planting of spring
		26-7	Fixed mount-Substrate of clip
		26-8	Fixed mount-Planting of clip
		26-9	Moto-Magnet
		26-10	Oil seal-black
		26-11	Fan blade-black plastic
		26-12	Fan blade-metal nut
		26-13	Moto-Substrate of rotor fixed mount
		26-14	Moto-Planting of rotor fixed mount
		26-15	Graphite guide-black plastic
		26-16	Graphite guide-metal guide
		26-17	Graphite guide-graphite
		26-18	Graphite guide-metal insert
		26-19	Graphite guide-copper wire
		26-20	Graphite guide-Substrate of spring
		26-21	Graphite guide-Planting of spring
		26-22	Moto-Metal cable tie
		26-23	Stator-silicon steel sheet
		26-24	Stator-white tape
		26-25	Stator-copper wire
		26-26	Stator-coil former
		26-27	Rotor-spiale

Component No.	Component name	Specimen No.	Specimen name
		26-28	Rotor-bearing
		26-29	Rotor-black plastic
		26-30	Rotor-coppery metal sheet
		26-31	Rotor-silicon sheet
		26-32	Rotor-blue plastic
		26-33	Rotor-copper coil
		26-34	Rotor-coil former
		26-35	Rotor-plastic sheet
		26-36	Rotor-coupler
		26-37	Heat protector-white plastic
		26-38	Heat protector-metal stator
		26-39	Heat protector-ceram
		26-40	Heat protector-metal sheet 1
		26-41	Heat protector-metal sheet 2
		26-42	Heat protector-metal cap
		26-43	Heat protector-insulation paper
		26-44	Black heat-shrinkable T bush
		26-45	Moto-White trunking
		26-46	Heat protector-metal sheet 3
		27	Internal wiring
27-2	Internal wiring-White trunking		
27-3	Internal wiring-Transparency terminal sheath		
27-4	Internal wiring-Terminal sheath 1		
27-5	Internal wiring-Terminal sheath 2		
27-6	Internal wiring-Terminal sheath 3		
27-7	Internal wiring-Black trunking		
27-8	Cable tie 1-yellow plastic		
27-9	Internal wiring-White connector		
27-10	Cable tie 2-white plastic		

Component No.	Component name	Specimen No.	Specimen name
		27-11	Internal wiring-Substrate of metal insert 1
		27-12	Internal wiring-Plating of metal insert 1
		27-13	Internal wiring-Substrate of metal insert 2
		27-14	Internal wiring-Plating of metal insert 2
		27-15	Internal wiring-Substrate of metal insert 3
		27-16	Internal wiring-Plating of metal insert 3
		27-17	Internal wiring-Substrate of metal insert 4
		27-18	Internal wiring-Plating of metal insert 4
		27-19	Heat-shrinkable T bush 1
		27-20	Internal wiring-Substrate of metal cord
		27-21	Heat-shrinkable T bush 2
		27-22	Internal wiring-Red plastic wire jacket 1
		27-23	Internal wiring-Red plastic wire jacket 2
		27-24	Internal wiring-Electronic component 1
		27-25	Internal wiring-Grey plastic wire jacket
		27-26	Internal wiring-Black plastic wire jacket 1
		27-27	Internal wiring-Black plastic wire jacket 2
		27-28	Internal wiring-Black plastic wire jacket 3
		27-29	Internal wiring-Green plastic wire jacket
		27-30	Internal wiring-Silver wire 1
		27-31	Internal wiring-Silver wire 2
		27-32	Internal wiring-Blue plastic wire jacket
		27-33	Internal wiring-Brown plastic

Component No.	Component name	Specimen No.	Specimen name
			wire jacket
		27-34	Internal wiring-Whitc connector 1
		27-35	Internal wiring-Whitc connector 2
		27-36	Internal wiring-Whitc connector 3
		27-37	Internal wiring-Whitc connector 4
		27-38	Internal wiring-White blue plastic wire jacket
		27-39	Internal wiring-White red plastic wire jacket 1
		27-40	Internal wiring-White red plastic wire jacket 2
		27-41	Internal wiring-Electronic component 2
		27-42	Internal wiring-Black plastic wire jacket 4
		27-43	Internal wiring-Black plastic wire jacket 5
		27-44	Internal wiring-Red plastic wire jacket 3
		27-45	PCB-material
		27-46	PCB-green paint
		27-47	PCB-soldering tin
		27-48	PCB-pin
		27-49	PCB-black plastic sheath
		27-50	PCB-metal sheet
		27-51	PCB-chip
28	Speed controller	28-1	Speed controller-Substrate of nut
		28-2	Speed controller-Plating of nut
		28-3	Speed controller-Substrate of washer
		28-4	Speed controller-Plating of washer
		28-5	Speed controller-Black plastic washer
		28-6	Speed controller-Metal sheet

Component No.	Component name	Specimen No.	Specimen name
		28-7	Speed controller-White plastic
		28-8	Speed controller-Metal knob pole
		28-9	Speed controller-PCB
		28-10	Speed controller-Metal cap
29	Screw 1	29-1	Screw 1-Substrate of screw 1
		29-2	Screw 1-Plating of screw 1
		29-3	Screw 1-Black plastic
		29-4	Screw 1-magnet
30	Screw 2	30-1	Screw 2-Substrate of screw 2
		30-2	Screw 2-Plating of screw 2
		30-3	Screw 2-Substrate of gasket 1
		30-4	Screw 2-Plating of gasket 1
31	Screw 3	31-1	Screw 3-Substrate of screw 3
		31-2	Screw 3-Plating of screw 3
32	Screw 4	32-1	Screw 3-Substrate of screw 4
		32-2	Screw 3-Plating of screw 4
33	Screw 5	33-1	Screw 3-Substrate of screw 5
		33-2	Screw 3-Plating of screw 5
34	Screw 6	34-1	Screw 3-Substrate of screw 6
		34-2	Screw 3-Plating of screw 6
35	Screw 7	35-1	Screw 3-Substrate of screw 7
		35-2	Screw 3-Plating of screw 7
36	Screw 8	36-1	Screw 3-Substrate of screw 8
		36-2	Screw 3-Plating of screw 8
37	Screw 9	37-1	Screw 3-Substrate of screw 9
		37-2	Screw 3-Plating of screw 9
38	Screw 10	38-1	Screw 3-Substrate of screw 10
		38-2	Screw 3-Plating of screw 10
39	Screw 11	39-1	Screw 3-Substrate of screw 11

Component No.	Component name	Specimen No.	Specimen name
		39-2	Screw 3-Plating of screw 11
40	Gasket 1	40-1	Gasket 1-Substrate of gasket 1
		40-2	Gasket 1-Plating of gasket 1
41	Power cord	41-1	Cable tie-black plastic jacket
		41-2	Cable tie-iron wire
		41-3	Plug sheath-white plastic
		41-4	Power cord-Copper wire
		41-5	Power cord-Black plastic wire jacket
		41-6	Power cord-Blue plastic wire jacket
		41-7	Power cord-Yellow green plastic wire jacket
		41-8	Power cord-Brown plastic wire jacket
		41-9	Coupler-black plastic jacket
		41-10	Coupler-black plastic inner
		41-11	Coupler-metal
		41-12	Power cord-Substrate of plug
		41-13	Power cord-Plating of plug
		41-14	Power cord-Inner bracket of plug
41-15	Plug-black plastic jacket		

# Test Result

Table 2

No.	Test Sample:	Screening Result						Verification Test Result							Verdict
		Pb	Cd	Hg	Cr	Br	Verdict	Pb	Cd	Hg	(Cr VI)		PBBs	PBDEs	
											1000 (d)	0.02 (e)			
Requirement (mg/kg)	b)	b)	b)	b)	b)		1000	100	1000	1000	1000	1000	1000		
MDL (mg/kg)	10	10	10	10	10		5	5	5	5	5	50	50		
1	User manual	N.D.	N.D.	N.D.	N.D.	N.D.	P	/	/	/	/	/	/	/	P
2	Filler cap	N.D.	N.D.	N.D.	N.D.	N.D.	P	/	/	/	/	/	/	/	P
3	Jar lid	N.D.	N.D.	N.D.	N.D.	N.D.	P	/	/	/	/	/	/	/	P
4-1	Container-Transparent plastic	N.D.	N.D.	N.D.	N.D.	N.D.	P	/	/	/	/	/	/	/	P
4-2	Container-Black coating	N.D.	N.D.	N.D.	N.D.	N.D.	P	/	/	/	/	/	/	/	P
5-1	Stirring knife 1-Substrate of locking ring	N.D.	N.D.	N.D.	N.D.	—	P	/	/	/	/	/	/	/	P
5-2	Stirring knife 1-Plating of locking ring	N.D.	N.D.	N.D.	1.8×10 <sup>5</sup>	—	V	/	/	/	/	Negative	/	/	P
5-3	Stirring knife 1-Substrate of hex nut	N.D.	N.D.	N.D.	N.D.	—	P	/	/	/	/	/	/	/	P
5-4	Stirring knife 1-Plating of hex nut	N.D.	N.D.	N.D.	1.7×10 <sup>5</sup>	—	V	/	/	/	/	Negative	/	/	P
5-5	Stirring knife 1-Substrate of hex nut	N.D.	N.D.	N.D.	N.D.	—	P	/	/	/	/	/	/	/	P



No.	Test Sample:	Screening Result						Verification Test Result							Verdict
		Pb	Cd	Hg	Cr	Br	Verdict	Pb	Cd	Hg	(Cr VI)		PBBs	PBDEs	
											1000 (d)	0.02 (e)			
Requirement (mg/kg)	b)	b)	b)	b)	b)		1000	100	1000	1000	1000	1000	1000		
MDL (mg/kg)	10	10	10	10	10		5	5	5	5	5	50	50		
5-6	Stirring knife 1-Plating of hex nut	N.D.	N.D.	N.D.	1.7×10 <sup>5</sup>	—	V	/	/	/	/	Negative	/	/	P
5-7	Stirring knife 1-Metal blade	N.D.	N.D.	N.D.	1.8×10 <sup>5</sup>	—	V	/	/	/	N.D.	/	/	/	P
5-8	Stirring knife 1-Metal blade support washer	N.D.	N.D.	N.D.	1.6×10 <sup>5</sup>	—	V	/	/	/	N.D.	/	/	/	P
5-9	Stirring knife 1-Metal permanent seat	N.D.	N.D.	N.D.	1373	—	V	/	/	/	N.D.	/	/	/	P
5-10	Stirring knife 1-Metal bearing	N.D.	N.D.	N.D.	1.6×10 <sup>5</sup>	—	V	/	/	/	N.D.	/	/	/	P
5-11	Stirring knife 1-Washer of white plastic	N.D.	N.D.	N.D.	N.D.	N.D.	P	/	/	/	/	/	/	/	P
6-1	Stirring knife 2-Substrate of locking ring	N.D.	N.D.	N.D.	N.D.	—	P	/	/	/	/	/	/	/	P

No.	Test Sample:	Screening Result						Verification Test Result							Verdict
		Pb	Cd	Hg	Cr	Br	Verdict	Pb	Cd	Hg	(Cr VI)		PBBs	PBDEs	
											1000 (d)	0.02 (e)			
Requirement (mg/kg)	b)	b)	b)	b)	b)		1000	100	1000	1000	1000	1000	1000		
MDL (mg/kg)	10	10	10	10	10		5	5	5	5	5	50	50		
6-2	Stirring knife 2-Plating of locking ring	N.D.	N.D.	N.D.	1.8×10 <sup>5</sup>	—	V	/	/	/	/	Negative	/	/	P
6-3	Stirring knife 2-Substrate of hex nut	N.D.	N.D.	N.D.	N.D.	—	P	/	/	/	/	/	/	/	P
6-4	Stirring knife 2-Plating of hex nut	N.D.	N.D.	N.D.	1.7×10 <sup>5</sup>	—	V	/	/	/	/	Negative	/	/	P
6-5	Stirring knife 2-Substrate of hex nut	N.D.	N.D.	N.D.	N.D.	—	P	/	/	/	/	/	/	/	P
6-6	Stirring knife 2-Plating of hex nut	N.D.	N.D.	N.D.	1.7×10 <sup>5</sup>	—	V	/	/	/	/	Negative	/	/	P
6-7	Stirring knife 2-Metal blade	N.D.	N.D.	N.D.	1.7×10 <sup>5</sup>	—	V	/	/	/	N.D.	/	/	/	P
6-8	Stirring knife 2-Metal blade support washer	N.D.	N.D.	N.D.	1.6×10 <sup>5</sup>	—	V	/	/	/	N.D.	/	/	/	P
6-9	Stirring knife 2-Metal permanent seat	N.D.	N.D.	N.D.	1.7×10 <sup>5</sup>	—	V	/	/	/	N.D.	/	/	/	P

No.	Test Sample:	Screening Result						Verification Test Result							Verdict
		Pb	Cd	Hg	Cr	Br	Verdict	Pb	Cd	Hg	(Cr VI)		PBBs	PBDEs	
											1000 (d)	0.02 (e)			
Requirement (mg/kg)	b)	b)	b)	b)	b)		1000	100	1000	1000	1000	1000	1000		
MDL (mg/kg)	10	10	10	10	10		5	5	5	5	5	50	50		
6-10	Stirring knife 2-Metal bearing	N.D.	N.D.	N.D.	1.8×10 <sup>5</sup>	—	V	/	/	/	N.D.	/	/	/	P
6-11	Stirring knife 2-Washer of white plastic	N.D.	N.D.	N.D.	N.D.	N.D.	P	/	/	/	/	/	/	/	P
7-1	Container-Substrate of stainless steel	N.D.	N.D.	N.D.	1.8×10 <sup>5</sup>	—	V	/	/	/	N.D.	/	/	/	P
7-2	Container-Black plastic	N.D.	N.D.	N.D.	N.D.	N.D.	P	/	/	/	/	/	/	/	P
8	Jar pad	N.D.	N.D.	N.D.	N.D.	N.D.	P	/	/	/	/	/	/	/	P
9	Metab	N.D.	N.D.	N.D.	732	—	V	/	/	/	N.D.	/	/	/	P
10	Jar pad	N.D.	N.D.	N.D.	N.D.	N.D.	P	/	/	/	/	/	/	/	P
11-1	Upper housing-Black plastic	N.D.	N.D.	N.D.	N.D.	N.D.	P	/	/	/	/	/	/	/	P
11-2	Upper housing-HB badge	N.D.	N.D.	N.D.	N.D.	N.D.	P	/	/	/	/	/	/	/	P
11-3	Upper housing-Hot melt glue	N.D.	N.D.	N.D.	N.D.	N.D.	P	/	/	/	/	/	/	/	P
12-1	Lower housing-Black plastic	N.D.	N.D.	N.D.	N.D.	N.D.	P	/	/	/	/	/	/	/	P
12-2	Lower housing-Tags	N.D.	N.D.	N.D.	N.D.	N.D.	P	/	/	/	/	/	/	/	P

No.	Test Sample:	Screening Result					Verdict	Verification Test Result						Verdict	
		Pb	Cd	Hg	Cr	Br		Pb	Cd	Hg	(Cr VI)		PBBs		PBDEs
											1000 (d)	0.02 (e)			
Requirement (mg/kg)	b)	b)	b)	b)	b)	1000	100	1000	1000	1000	1000	1000			
MDL (mg/kg)	10	10	10	10	10	5	5	5	5	5	50	50			
12-3	Lower housing-Nameplate	N.D.	N.D.	N.D.	N.D.	N.D.	P	/	/	/	/	/	/	/	P
12-4	Rubber foot-black plastic	N.D.	N.D.	N.D.	N.D.	N.D.	P	/	/	/	/	/	/	/	P
13	Moto shell	N.D.	N.D.	N.D.	N.D.	N.D.	P	/	/	/	/	/	/	/	P
14	Operation panel tags	N.D.	N.D.	N.D.	N.D.	N.D.	P	/	/	/	/	/	/	/	P
15-1	Flexible PCB-Flexible PCB	N.D.	N.D.	N.D.	N.D.	N.D.	P	/	/	/	/	/	/	/	P
15-2	Flexible PCB-Black plastic	N.D.	N.D.	N.D.	N.D.	N.D.	P	/	/	/	/	/	/	/	P
15-3	Black connector-metal	N.D.	N.D.	N.D.	N.D.	—	P	/	/	/	/	/	/	/	P
15-4	Flexible PCB-Tags	N.D.	N.D.	N.D.	N.D.	N.D.	P	/	/	/	/	/	/	/	P
16-1	Knob-Black plastic	N.D.	N.D.	N.D.	N.D.	N.D.	P	/	/	/	/	/	/	/	P
16-2	Knob-White coating	N.D.	N.D.	N.D.	N.D.	N.D.	P	/	/	/	/	/	/	/	P
17	Seal ring	N.D.	N.D.	N.D.	N.D.	N.D.	P	/	/	/	/	/	/	/	P
18	Plastics 1	N.D.	N.D.	N.D.	N.D.	N.D.	P	/	/	/	/	/	/	/	P
19	Plastics 2	N.D.	N.D.	N.D.	N.D.	N.D.	P	/	/	/	/	/	/	/	P
20-1	Socket coupler-Black plastic	N.D.	N.D.	N.D.	N.D.	N.D.	P	/	/	/	/	/	/	/	P
20-2	Coupler-Substrate of plug	N.D.	N.D.	N.D.	N.D.	—	P	/	/	/	/	/	/	/	P

No.	Test Sample:	Screening Result						Verification Test Result							Verdict
		Pb	Cd	Hg	Cr	Br	Verdict	Pb	Cd	Hg	(Cr VI)		PBBs	PBDEs	
											1000 (d)	0.02 (e)			
Requirement (mg/kg)	b)	b)	b)	b)	b)		1000	100	1000	1000	1000	1000	1000		
MDL (mg/kg)	10	10	10	10	10		5	5	5	5	5	50	50		
20-3	Coupler-Plating of plug	N.D.	N.D.	N.D.	N.D.	—	P	/	/	/	/	/	/	/	P
21-1	Fixed metal ring-Substrate of fixed metal ring	N.D.	N.D.	N.D.	N.D.	—	P	/	/	/	/	/	/	/	P
21-2	Fixed metal ring-Plating of fixed metal ring	N.D.	N.D.	N.D.	1.8×10 <sup>5</sup>	—	V	/	/	/	/	Negative	/	/	P
22	Transparent plastic sheet	N.D.	N.D.	N.D.	N.D.	N.D.	P	/	/	/	/	/	/	/	P
23-1	Power switch controller-Black plastic 1	N.D.	N.D.	N.D.	N.D.	N.D.	P	/	/	/	/	/	/	/	P
23-2	Power switch controller-Indicator light	N.D.	N.D.	N.D.	N.D.	N.D.	P	/	/	/	/	/	/	/	P
23-3	Power switch controller-Soldering tin	N.D.	N.D.	N.D.	N.D.	—	P	/	/	/	/	/	/	/	P
23-4	Power switch controller-Pin	N.D.	N.D.	N.D.	N.D.	—	P	/	/	/	/	/	/	/	P

No.	Test Sample:	Screening Result						Verification Test Result							Verdict
		Pb	Cd	Hg	Cr	Br	Verdict	Pb	Cd	Hg	(Cr VI)		PBBs	PBDEs	
											1000 (d)	0.02 (e)			
Requirement (mg/kg)	b)	b)	b)	b)	b)		1000	100	1000	1000	1000	1000	1000		
MDL (mg/kg)	10	10	10	10	10		5	5	5	5	5	50	50		
23-5	Power switch controller-Substrate of spring 1	N.D.	N.D.	N.D.	N.D.	—	P	/	/	/	/	/	/	/	P
23-6	Power switch controller-Plating of spring 1	N.D.	N.D.	N.D.	1072	—	V	/	/	/	/	Negative	/	/	P
23-7	Power switch controller-Substrate of spring 2	N.D.	N.D.	N.D.	N.D.	—	P	/	/	/	/	/	/	/	P
23-8	Power switch controller-Plating of spring 2	N.D.	N.D.	N.D.	1032	—	V	/	/	/	/	Negative	/	/	P
23-9	Power switch controller-Substrate of metal insert 1	N.D.	N.D.	N.D.	N.D.	—	P	/	/	/	/	/	/	/	P
23-10	Power switch controller-Plating of metal insert 1	N.D.	N.D.	N.D.	N.D.	—	P	/	/	/	/	/	/	/	P
23-11	Power switch controller-Contact 1	N.D.	2.8×10 <sup>4</sup>	N.D.	N.D.	—	P▲1	/	/	/	/	/	/	/	P▲1

No.	Test Sample:	Screening Result						Verification Test Result							Verdict
		Pb	Cd	Hg	Cr	Br	Verdict	Pb	Cd	Hg	(Cr VI)		PBBs	PBDEs	
											1000 (d)	0.02 (e)			
Requirement (mg/kg)	b)	b)	b)	b)	b)		1000	100	1000	1000	1000	1000	1000		
MDL (mg/kg)	10	10	10	10	10		5	5	5	5	5	50	50		
23-12	Power switch controller-Substrate of metal insert 2	N.D.	N.D.	N.D.	N.D.	—	P	/	/	/	/	/	/	/	P
23-13	Power switch controller-P-lating of metal insert 2	N.D.	N.D.	N.D.	N.D.	—	P	/	/	/	/	/	/	/	P
23-14	Power switch controller-Substrate of metal insert 3	N.D.	N.D.	N.D.	N.D.	—	P	/	/	/	/	/	/	/	P
23-15	Power switch controller-P-lating of metal insert 3	N.D.	N.D.	N.D.	3.3×10 <sup>4</sup>	—	V	/	/	/	/	Negative	/	/	P
23-16	Power switch controller-Contact 2	N.D.	3.5×10 <sup>4</sup>	N.D.	N.D.	—	P▲1	/	/	/	/	/	/	/	P▲1
23-17	Power switch controller-Metal bar	N.D.	N.D.	N.D.	N.D.	—	P	/	/	/	/	/	/	/	P
23-18	Power switch controller-F-use	N.D.	N.D.	N.D.	N.D.	—	P	/	/	/	/	/	/	/	P

No.	Test Sample:	Screening Result						Verification Test Result							Verdict
		Pb	Cd	Hg	Cr	Br	Verdict	Pb	Cd	Hg	(Cr VI)		PBBs	PBDEs	
											1000 (d)	0.02 (e)			
Requirement (mg/kg)	b)	b)	b)	b)	b)		1000	100	1000	1000	1000	1000	1000		
MDL (mg/kg)	10	10	10	10	10		5	5	5	5	5	50	50		
23-19	Power switch controller-Red plastic	N.D.	N.D.	N.D.	N.D.	N.D.	P	/	/	/	/	/	/	/	P
23-20	Power switch controller-Black plastic 2	N.D.	N.D.	N.D.	N.D.	N.D.	P	/	/	/	/	/	/	/	P
23-21	Power switch controller-Metal connector	N.D.	N.D.	N.D.	N.D.	—	P	/	/	/	/	/	/	/	P
24-1	PCB 1-Material	N.D.	N.D.	N.D.	N.D.	N.D.	P	/	/	/	/	/	/	/	P
24-2	PCB 1-Green paint	N.D.	N.D.	N.D.	N.D.	N.D.	P	/	/	/	/	/	/	/	P
24-3	PCB 1-Soldering tin	N.D.	N.D.	N.D.	N.D.	—	P	/	/	/	/	/	/	/	P
24-4	PCB 1-Pin	N.D.	N.D.	N.D.	N.D.	—	P	/	/	/	/	/	/	/	P
24-5	PCB 1-Substrate of insert	N.D.	N.D.	N.D.	N.D.	—	P	/	/	/	/	/	/	/	P
24-6	PCB 1-Plating of insert	N.D.	N.D.	N.D.	N.D.	—	P	/	/	/	/	/	/	/	P
24-7	White plug in terminal block 1-white plastic	N.D.	N.D.	N.D.	N.D.	N.D.	P	/	/	/	/	/	/	/	P



No.	Test Sample:	Screening Result						Verification Test Result							Verdict
		Pb	Cd	Hg	Cr	Br	Verdict	Pb	Cd	Hg	(Cr VI)		PBBs	PBDEs	
											1000 (d)	0.02 (e)			
Requirement (mg/kg)	b)	b)	b)	b)	b)		1000	100	1000	1000	1000	1000	1000		
MDL (mg/kg)	10	10	10	10	10		5	5	5	5	5	50	50		
24-8	White plug in terminal block 2-white plastic	N.D.	N.D.	N.D.	N.D.	N.D.	P	/	/	/	/	/	/	/	P
24-9	PCB 1-White size	N.D.	N.D.	N.D.	N.D.	N.D.	P	/	/	/	/	/	/	/	P
24-10	PCB 1-Tags	N.D.	N.D.	N.D.	N.D.	N.D.	P	/	/	/	/	/	/	/	P
24-11	PCB 1-Rectifier	N.D.	N.D.	N.D.	1243	—	V	/	/	/	N.D.	/	/	/	P
24-12	Washer-black plastic	N.D.	N.D.	N.D.	N.D.	N.D.	P	/	/	/	/	/	/	/	P
24-13	PCB 1-Substrate of screw 1	N.D.	N.D.	N.D.	N.D.	—	P	/	/	/	/	/	/	/	P
24-14	PCB 1-Plating of screw 1	N.D.	N.D.	N.D.	661	—	P	/	/	/	/	/	/	/	P
24-15	PCB 1-Substrate of screw 2	N.D.	N.D.	N.D.	N.D.	—	P	/	/	/	/	/	/	/	P
24-16	PCB 1-Plating of screw 2	N.D.	N.D.	N.D.	364	—	P	/	/	/	/	/	/	/	P
24-17	PCB 1-Substrate of gasket 1	N.D.	N.D.	N.D.	N.D.	—	P	/	/	/	/	/	/	/	P
24-18	PCB 1-Plating of gasket 1	N.D.	N.D.	N.D.	N.D.	—	P	/	/	/	/	/	/	/	P
24-19	PCB 1-Substrate of gasket 2	N.D.	N.D.	N.D.	N.D.	—	P	/	/	/	/	/	/	/	P

No.	Test Sample:	Screening Result						Verification Test Result							Verdict
		Pb	Cd	Hg	Cr	Br	Verdict	Pb	Cd	Hg	(Cr VI)		PBBs	PBDEs	
											1000 (d)	0.02 (e)			
Requirement (mg/kg)	b)	b)	b)	b)	b)		1000	100	1000	1000	1000	1000	1000		
MDL (mg/kg)	10	10	10	10	10		5	5	5	5	5	50	50		
24-20	PCB 1-Plating of gasket 2	N.D.	N.D.	N.D.	690	—	P	/	/	/	/	/	/	/	P
24-21	PCB 1-Resistance 1	N.D.	N.D.	N.D.	N.D.	N.D.	P	/	/	/	/	/	/	/	P
24-22	PCB 1-Glass sealed diode	6.5×10 <sup>5</sup>	N.D.	N.D.	N.D.	N.D.	P▲2	/	/	/	/	/	/	/	P▲2
24-23	PCB 1-Audion	N.D.	N.D.	N.D.	N.D.	N.D.	P	/	/	/	/	/	/	/	P
24-24	PCB 1-Capacitance 1	N.D.	N.D.	N.D.	N.D.	N.D.	P	/	/	/	/	/	/	/	P
24-25	PCB 1-Radiator	N.D.	N.D.	N.D.	N.D.	—	P	/	/	/	/	/	/	/	P
24-26	Relay-black plastic shell	N.D.	N.D.	N.D.	N.D.	N.D.	P	/	/	/	/	/	/	/	P
24-27	Relay-copper wire	N.D.	N.D.	N.D.	N.D.	—	P	/	/	/	/	/	/	/	P
24-28	Relay-white plastic	N.D.	N.D.	N.D.	N.D.	N.D.	P	/	/	/	/	/	/	/	P
24-29	Relay-copper sheet 1	N.D.	N.D.	N.D.	N.D.	—	P	/	/	/	/	/	/	/	P
24-30	Relay-contact 1	N.D.	N.D.	N.D.	N.D.	—	P	/	/	/	/	/	/	/	P
24-31	Relay-metal sheet 1	N.D.	N.D.	N.D.	N.D.	—	P	/	/	/	/	/	/	/	P
24-32	Relay-metal sheet 2	N.D.	N.D.	N.D.	N.D.	—	P	/	/	/	/	/	/	/	P
24-33	Relay-metal sheet 3	N.D.	N.D.	N.D.	1.7×10 <sup>5</sup>	—	V	/	/	/	N.D.	/	/	/	P
24-34	Relay-coil former	N.D.	N.D.	N.D.	N.D.	N.D.	P	/	/	/	/	/	/	/	P

No.	Test Sample:	Screening Result						Verification Test Result							Verdict
		Pb	Cd	Hg	Cr	Br	Verdict	Pb	Cd	Hg	(Cr VI)		PBBs	PBDEs	
											1000 (d)	0.02 (e)			
Requirement (mg/kg)	b)	b)	b)	b)	b)		1000	100	1000	1000	1000	1000	1000		
MDL (mg/kg)	10	10	10	10	10		5	5	5	5	5	50	50		
24-35	Yellow capacitance-host	N.D.	N.D.	N.D.	N.D.	—	P	/	/	/	/	/	/	/	P
24-36	Yellow capacitance-filler	N.D.	N.D.	N.D.	N.D.	—	P	/	/	/	/	/	/	/	P
24-37	Yellow capacitance shell	N.D.	N.D.	N.D.	N.D.	N.D.	P	/	/	/	/	/	/	/	P
25-1	PCB 2-Material	N.D.	N.D.	N.D.	N.D.	N.D.	P	/	/	/	/	/	/	/	P
25-2	PCB 2-Green paint	N.D.	N.D.	N.D.	N.D.	N.D.	P	/	/	/	/	/	/	/	P
25-3	PCB 2-Soldering tin	N.D.	N.D.	N.D.	N.D.	—	P	/	/	/	/	/	/	/	P
25-4	PCB 2-Pin	N.D.	N.D.	N.D.	N.D.	—	P	/	/	/	/	/	/	/	P
25-5	PCB 2-Substrate of insert	N.D.	N.D.	N.D.	N.D.	—	P	/	/	/	/	/	/	/	P
25-6	PCB 2-Plating of insert	N.D.	N.D.	N.D.	N.D.	—	P	/	/	/	/	/	/	/	P
25-7	White plug in terminal block 1-white plastic	N.D.	N.D.	N.D.	N.D.	N.D.	P	/	/	/	/	/	/	/	P
25-8	White plug in terminal block 2-white plastic	N.D.	N.D.	N.D.	N.D.	N.D.	P	/	/	/	/	/	/	/	P

No.	Test Sample:	Screening Result						Verification Test Result							Verdict
		Pb	Cd	Hg	Cr	Br	Verdict	Pb	Cd	Hg	(Cr VI)		PBBs	PBDEs	
											1000 (d)	0.02 (e)			
Requirement (mg/kg)	b)	b)	b)	b)	b)		1000	100	1000	1000	1000	1000	1000		
MDL (mg/kg)	10	10	10	10	10		5	5	5	5	5	50	50		
25-9	Black plug in terminal block 1-black plastic	N.D.	N.D.	N.D.	N.D.	N.D.	P	/	/	/	/	/	/	/	P
25-10	Black plug in terminal block 2-black plastic	N.D.	N.D.	N.D.	N.D.	N.D.	P	/	/	/	/	/	/	/	P
25-11	PCB 2-White size	N.D.	N.D.	N.D.	N.D.	N.D.	P	/	/	/	/	/	/	/	P
25-12	Washer-black plastic	N.D.	N.D.	N.D.	N.D.	N.D.	P	/	/	/	/	/	/	/	P
25-13	PCB 2-Radiator	N.D.	N.D.	N.D.	N.D.	—	P	/	/	/	/	/	/	/	P
25-14	Capacitance 1-black plastic jacket	N.D.	N.D.	N.D.	N.D.	N.D.	P	/	/	/	/	/	/	/	P
25-15	Capacitance 1-metal shell	N.D.	N.D.	N.D.	N.D.	—	P	/	/	/	/	/	/	/	P
25-16	Capacitance 1-pin	N.D.	N.D.	N.D.	N.D.	—	P	/	/	/	/	/	/	/	P
25-17	Capacitance 1-host	N.D.	N.D.	N.D.	N.D.	N.D.	P	/	/	/	/	/	/	/	P
25-18	Capacitance 1-black plastic rubber plug	N.D.	N.D.	N.D.	N.D.	N.D.	P	/	/	/	/	/	/	/	P
25-19	Capacitance 2-black plastic jacket	N.D.	N.D.	N.D.	N.D.	N.D.	P	/	/	/	/	/	/	/	P

No.	Test Sample:	Screening Result						Verification Test Result							Verdict
		Pb	Cd	Hg	Cr	Br	Verdict	Pb	Cd	Hg	(Cr VI)		PBBs	PBDEs	
											1000 (d)	0.02 (e)			
Requirement (mg/kg)	b)	b)	b)	b)	b)		1000	100	1000	1000	1000	1000	1000		
MDL (mg/kg)	10	10	10	10	10		5	5	5	5	5	50	50		
25-20	Capacitance 2-metal shell	N.D.	N.D.	N.D.	N.D.	—	P	/	/	/	/	/	/	/	P
25-21	Capacitance 2-pin	N.D.	N.D.	N.D.	N.D.	—	P	/	/	/	/	/	/	/	P
25-22	Capacitance 2-host	N.D.	N.D.	N.D.	N.D.	N.D.	P	/	/	/	/	/	/	/	P
25-23	Capacitance 2-black plastic rubber plug	N.D.	N.D.	N.D.	N.D.	N.D.	P	/	/	/	/	/	/	/	P
25-24	Capacitance 3-black plastic jacket	N.D.	N.D.	N.D.	N.D.	N.D.	P	/	/	/	/	/	/	/	P
25-25	Capacitance 3-metal shell	N.D.	N.D.	N.D.	N.D.	—	P	/	/	/	/	/	/	/	P
25-26	Capacitance 3-pin	N.D.	N.D.	N.D.	N.D.	—	P	/	/	/	/	/	/	/	P
25-27	Capacitance 3-host	N.D.	N.D.	N.D.	N.D.	N.D.	P	/	/	/	/	/	/	/	P
25-28	Capacitance 3-black plastic rubber plug	N.D.	N.D.	N.D.	N.D.	N.D.	P	/	/	/	/	/	/	/	P
25-29	Yellow capacitance 1-host	N.D.	N.D.	N.D.	N.D.	N.D.	P	/	/	/	/	/	/	/	P
25-30	Yellow capacitance 1-filler	N.D.	N.D.	N.D.	N.D.	N.D.	P	/	/	/	/	/	/	/	P
25-31	Yellow capacitance 1-shell	N.D.	N.D.	N.D.	N.D.	N.D.	P	/	/	/	/	/	/	/	P

No.	Test Sample:	Screening Result					Verdict	Verification Test Result						Verdict	
		Pb	Cd	Hg	Cr	Br		Pb	Cd	Hg	(Cr VI)		PBBs		PBDEs
											1000 (d)	0.02 (e)			
Requirement (mg/kg)	b)	b)	b)	b)	b)	1000	100	1000	1000	1000	1000	1000	1000		
MDL (mg/kg)	10	10	10	10	10	5	5	5	5	5	50	50			
25-32	Yellow capacitance 2-host	N.D.	N.D.	N.D.	N.D.	N.D.	P	/	/	/	/	/	/	/	P
25-33	Yellow capacitance 2-filler	N.D.	N.D.	N.D.	N.D.	N.D.	P	/	/	/	/	/	/	/	P
25-34	Yellow capacitance 2-shell	N.D.	N.D.	N.D.	N.D.	N.D.	P	/	/	/	/	/	/	/	P
25-35	Yellow capacitance 3-host	N.D.	N.D.	N.D.	N.D.	N.D.	P	/	/	/	/	/	/	/	P
25-36	Yellow capacitance 3-filler	N.D.	N.D.	N.D.	N.D.	N.D.	P	/	/	/	/	/	/	/	P
25-37	Yellow capacitance 3-shell	N.D.	N.D.	N.D.	N.D.	N.D.	P	/	/	/	/	/	/	/	P
25-38	Yellow capacitance 3-tags	N.D.	N.D.	N.D.	N.D.	N.D.	P	/	/	/	/	/	/	/	P
25-39	Coil-PCB	N.D.	N.D.	N.D.	N.D.	N.D.	P	/	/	/	/	/	/	/	P
25-40	Coil-copper wire	N.D.	N.D.	N.D.	N.D.	—	P	/	/	/	/	/	/	/	P
25-41	Coil-coil	N.D.	N.D.	N.D.	N.D.	N.D.	P	/	/	/	/	/	/	/	P
25-42	PCB 2-Resistance 1	N.D.	N.D.	N.D.	N.D.	N.D.	P	/	/	/	/	/	/	/	P
25-43	PCB 2-Chip	N.D.	N.D.	N.D.	N.D.	N.D.	P	/	/	/	/	/	/	/	P
25-44	PCB 2-Audion	N.D.	N.D.	N.D.	N.D.	N.D.	P	/	/	/	/	/	/	/	P
25-45	PCB 2-Diode 1	N.D.	N.D.	N.D.	N.D.	N.D.	P	/	/	/	/	/	/	/	P

No.	Test Sample:	Screening Result						Verification Test Result							Verdict
		Pb	Cd	Hg	Cr	Br	Verdict	Pb	Cd	Hg	(Cr VI)		PBBs	PBDEs	
											1000 (d)	0.02 (e)			
Requirement (mg/kg)	b)	b)	b)	b)	b)		1000	100	1000	1000	1000	1000	1000		
MDL (mg/kg)	10	10	10	10	10		5	5	5	5	5	50	50		
25-46	PCB 2-Diode 2	N.D.	N.D.	N.D.	N.D.	N.D.	P	/	/	/	/	/	/	/	P
25-47	Transformer-black plastic	N.D.	N.D.	N.D.	N.D.	N.D.	P	/	/	/	/	/	/	/	P
25-48	Transformer-yellow tags	N.D.	N.D.	N.D.	N.D.	N.D.	P	/	/	/	/	/	/	/	P
25-49	Transformer-coil former	N.D.	N.D.	N.D.	N.D.	N.D.	P	/	/	/	/	/	/	/	P
25-50	Transformer-electric component	N.D.	N.D.	N.D.	N.D.	N.D.	P	/	/	/	/	/	/	/	P
25-51	Transformer-nameplate	N.D.	N.D.	N.D.	N.D.	N.D.	P	/	/	/	/	/	/	/	P
25-52	Transformer-silicon steel sheet	N.D.	N.D.	N.D.	6882	—	V	/	/	/	N.D.	/	/	/	P
25-53	Transformer-copper wire	N.D.	N.D.	N.D.	N.D.	—	P	/	/	/	/	/	/	/	P
25-54	Transformer-fixed cap-black plastic	N.D.	N.D.	N.D.	N.D.	N.D.	P	/	/	/	/	/	/	/	P
25-55	PCB-material	N.D.	N.D.	N.D.	N.D.	N.D.	P	/	/	/	/	/	/	/	P
25-56	PCB-green paint	N.D.	N.D.	N.D.	N.D.	N.D.	P	/	/	/	/	/	/	/	P
25-57	PCB-soldering tin	N.D.	N.D.	N.D.	N.D.	—	P	/	/	/	/	/	/	/	P
25-58	PCB-pin	N.D.	N.D.	N.D.	N.D.	—	P	/	/	/	/	/	/	/	P

No.	Test Sample:	Screening Result						Verification Test Result							Verdict
		Pb	Cd	Hg	Cr	Br	Verdict	Pb	Cd	Hg	(Cr VI)		PBBs	PBDEs	
											1000 (d)	0.02 (e)			
Requirement (mg/kg)	b)	b)	b)	b)	b)		1000	100	1000	1000	1000	1000	1000		
MDL (mg/kg)	10	10	10	10	10		5	5	5	5	5	50	50		
25-59	PCB-LED	N.D.	N.D.	N.D.	N.D.	N.D.	P	/	/	/	/	/	/	/	P
25-60	PCB 2-Substrate of screw 1	N.D.	N.D.	N.D.	N.D.	—	P	/	/	/	/	/	/	/	P
25-61	PCB 2-Plating of screw 1	N.D.	N.D.	N.D.	N.D.	—	P	/	/	/	/	/	/	/	P
25-62	PCB 2-Substrate of screw 2	N.D.	N.D.	N.D.	N.D.	—	P	/	/	/	/	/	/	/	P
25-63	PCB 2-Plating of screw 2	N.D.	N.D.	N.D.	472	—	P	/	/	/	/	/	/	/	P
25-64	PCB 2-Substrate of gasket 1	N.D.	N.D.	N.D.	N.D.	—	P	/	/	/	/	/	/	/	P
25-65	PCB 2-Plating of gasket 1	N.D.	N.D.	N.D.	N.D.	—	P	/	/	/	/	/	/	/	P
25-66	PCB 2-Substrate of gasket 2	N.D.	N.D.	N.D.	N.D.	—	P	/	/	/	/	/	/	/	P
25-67	PCB 2-Plating of gasket 2	N.D.	N.D.	N.D.	N.D.	—	P	/	/	/	/	/	/	/	P
25-68	PCB 2-Substrate of nut	N.D.	N.D.	N.D.	N.D.	—	P	/	/	/	/	/	/	/	P
25-69	PCB 2-Plating of nut	N.D.	N.D.	N.D.	593	—	P	/	/	/	/	/	/	/	P
26-1	Fixed mount-metal mount	N.D.	N.D.	N.D.	745	—	V	/	/	/	N.D.	/	/	/	P



No.	Test Sample:	Screening Result						Verification Test Result							Verdict
		Pb	Cd	Hg	Cr	Br	Verdict	Pb	Cd	Hg	(Cr VI)		PBBs	PBDEs	
											1000 (d)	0.02 (e)			
Requirement (mg/kg)	b)	b)	b)	b)	b)		1000	100	1000	1000	1000	1000	1000		
MDL (mg/kg)	10	10	10	10	10		5	5	5	5	5	50	50		
26-2	Fixed mount-brown plastic	N.D.	N.D.	N.D.	N.D.	N.D.	P	/	/	/	/	/	/	/	P
26-3	Fixed mount-black plastic washer	N.D.	N.D.	N.D.	N.D.	N.D.	P	/	/	/	/	/	/	/	P
26-4	Fixed mount-metal cap	N.D.	N.D.	N.D.	1.8×10 <sup>5</sup>	—	V	/	/	/	N.D.	/	/	/	P
26-5	Fixed mount-Substrate of spring	N.D.	N.D.	N.D.	N.D.	—	P	/	/	/	/	/	/	/	P
26-6	Fixed mount-Plan-ting of spring	N.D.	N.D.	N.D.	1067	—	V	/	/	/	/	Negative	/	/	P
26-7	Fixed mount-Substrate of clip	N.D.	N.D.	N.D.	N.D.	—	P	/	/	/	/	/	/	/	P
26-8	Fixed mount-Plan-ting of clip	N.D.	N.D.	N.D.	2869	—	V	/	/	/	/	Negative	/	/	P
26-9	Moto-Magnet	N.D.	N.D.	N.D.	N.D.	—	P	/	/	/	/	/	/	/	P
26-10	Oil seal-black	N.D.	N.D.	N.D.	N.D.	N.D.	P	/	/	/	/	/	/	/	P
26-11	Fan blade-black plastic	N.D.	N.D.	N.D.	N.D.	N.D.	P	/	/	/	/	/	/	/	P
26-12	Fan blade-metal nut	N.D.	N.D.	N.D.	1.7×10 <sup>5</sup>	—	V	/	/	/	N.D.	/	/	/	P

No.	Test Sample:	Screening Result						Verification Test Result							Verdict
		Pb	Cd	Hg	Cr	Br	Verdict	Pb	Cd	Hg	(Cr VI)		PBBs	PBDEs	
											1000 (d)	0.02 (e)			
Requirement (mg/kg)	b)	b)	b)	b)	b)		1000	100	1000	1000	1000	1000	1000		
MDL (mg/kg)	10	10	10	10	10		5	5	5	5	5	50	50		
26-13	Moto-Substrate of rotor fixed mount	N.D.	N.D.	N.D.	N.D.	—	P	/	/	/	/	/	/	/	P
26-14	Moto-Planting of rotor fixed mount	N.D.	N.D.	N.D.	N.D.	—	P	/	/	/	/	/	/	/	P
26-15	Graphite guide-black plastic	N.D.	N.D.	N.D.	N.D.	N.D.	P	/	/	/	/	/	/	/	P
26-16	Graphite guide-metal guide	N.D.	N.D.	N.D.	N.D.	—	P	/	/	/	/	/	/	/	P
26-17	Graphite guide-graphite	N.D.	N.D.	N.D.	N.D.	—	P	/	/	/	/	/	/	/	P
26-18	Graphite guide-metal insert	N.D.	N.D.	N.D.	N.D.	—	P	/	/	/	/	/	/	/	P
26-19	Graphite guide-copper wire	N.D.	N.D.	N.D.	N.D.	—	P	/	/	/	/	/	/	/	P
26-20	Graphite guide-Substrate of spring	N.D.	N.D.	N.D.	N.D.	—	P	/	/	/	/	/	/	/	P
26-21	Graphite guide-Planting of spring	N.D.	N.D.	N.D.	1.9×10 <sup>5</sup>	—	V	/	/	/	/	Negative	/	/	P
26-22	Moto-Metal cable tie	N.D.	N.D.	N.D.	950	—	V	/	/	/	N.D.	/	/	/	P
26-23	Stator-silicon steel sheet	N.D.	N.D.	N.D.	2469	—	V	/	/	/	N.D.	/	/	/	P

No.	Test Sample:	Screening Result						Verification Test Result							Verdict
		Pb	Cd	Hg	Cr	Br	Verdict	Pb	Cd	Hg	(Cr VI)		PBBs	PBDEs	
											1000 (d)	0.02 (e)			
Requirement (mg/kg)	b)	b)	b)	b)	b)		1000	100	1000	1000	1000	1000	1000		
MDL (mg/kg)	10	10	10	10	10		5	5	5	5	5	50	50		
26-24	Stator-white tape	N.D.	N.D.	N.D.	N.D.	N.D.	P	/	/	/	/	/	/	/	P
26-25	Stator-copper wire	N.D.	N.D.	N.D.	N.D.	—	P	/	/	/	/	/	/	/	P
26-26	Stator-coil former	N.D.	N.D.	N.D.	N.D.	N.D.	P	/	/	/	/	/	/	/	P
26-27	Rotor-spial- e	N.D.	N.D.	N.D.	1.6×10 <sup>5</sup>	—	V	/	/	/	N.D.	/	/	/	P
26-28	Rotor-bearing	N.D.	N.D.	N.D.	1.5×10 <sup>4</sup>	—	V	/	/	/	N.D.	/	/	/	P
26-29	Rotor-black plastic	N.D.	N.D.	N.D.	N.D.	N.D.	P	/	/	/	/	/	/	/	P
26-30	Rotor-copper metal sheet	N.D.	N.D.	N.D.	N.D.	—	P	/	/	/	/	/	/	/	P
26-31	Rotor-silicon sheet	N.D.	N.D.	N.D.	2386	—	V	/	/	/	N.D.	/	/	/	P
26-32	Rotor-blue plastic	N.D.	N.D.	N.D.	N.D.	N.D.	P	/	/	/	/	/	/	/	P
26-33	Rotor-copper coil	N.D.	N.D.	N.D.	N.D.	—	P	/	/	/	/	/	/	/	P
26-34	Rotor-coil former	N.D.	N.D.	N.D.	N.D.	N.D.	P	/	/	/	/	/	/	/	P
26-35	Rotor-plastic sheet	N.D.	N.D.	N.D.	N.D.	N.D.	P	/	/	/	/	/	/	/	P
26-36	Rotor-coupler	N.D.	N.D.	N.D.	N.D.	—	P	/	/	/	/	/	/	/	P
26-37	Heat protector-white plastic	N.D.	N.D.	N.D.	N.D.	N.D.	P	/	/	/	/	/	/	/	P
26-38	Heat protector-metal stator	N.D.	N.D.	N.D.	1.8×10 <sup>5</sup>	—	V	/	/	/	N.D.	/	/	/	P
26-39	Heat protector-ceramic	2.4×10 <sup>5</sup>	N.D.	N.D.	N.D.	N.D.	F	/	/	/	/	/	/	/	F

No.	Test Sample:	Screening Result						Verification Test Result							Verdict
		Pb	Cd	Hg	Cr	Br	Verdict	Pb	Cd	Hg	(Cr VI)		PBBs	PBDEs	
											1000 (d)	0.02 (e)			
Requirement (mg/kg)	b)	b)	b)	b)	b)		1000	100	1000	1000	1000	1000	1000		
MDL (mg/kg)	10	10	10	10	10		5	5	5	5	5	50	50		
26-40	Heat protector-metal sheet 1	N.D.	N.D.	N.D.	8497	—	V	/	/	/	N.D.	/	/	/	P
26-41	Heat protector-metal sheet 2	N.D.	N.D.	N.D.	N.D.	—	P	/	/	/	/	/	/	/	P
26-42	Heat protector-metal cap	N.D.	N.D.	N.D.	N.D.	—	P	/	/	/	/	/	/	/	P
26-43	Heat protector-insulation paper	N.D.	N.D.	N.D.	N.D.	N.D.	P	/	/	/	/	/	/	/	P
26-44	Black heat-shrinkable T bush	N.D.	N.D.	N.D.	N.D.	N.D.	P	/	/	/	/	/	/	/	P
26-45	Moto-White trunking	N.D.	N.D.	N.D.	N.D.	N.D.	P	/	/	/	/	/	/	/	P
26-46	Heat protector-metal sheet 3	N.D.	N.D.	N.D.	N.D.	—	P	/	/	/	/	/	/	/	P
27-1	Internal wiring-Coil	N.D.	N.D.	N.D.	N.D.	N.D.	P	/	/	/	/	/	/	/	P
27-2	Internal wiring-White trunking	N.D.	N.D.	N.D.	N.D.	N.D.	P	/	/	/	/	/	/	/	P
27-3	Internal wiring-Transparency terminal sheath	N.D.	N.D.	N.D.	N.D.	N.D.	P	/	/	/	/	/	/	/	P

No.	Test Sample:	Screening Result						Verification Test Result							Verdict
		Pb	Cd	Hg	Cr	Br	Verdict	Pb	Cd	Hg	(Cr VI)		PBBs	PBDEs	
											1000 (d)	0.02 (e)			
Requirement (mg/kg)	b)	b)	b)	b)	b)		1000	100	1000	1000	1000	1000	1000		
MDL (mg/kg)	10	10	10	10	10		5	5	5	5	5	50	50		
27-4	Internal wiring-Terminal sheath 1	N.D.	N.D.	N.D.	N.D.	N.D.	P	/	/	/	/	/	/	/	P
27-5	Internal wiring-Terminal sheath 2	N.D.	N.D.	N.D.	N.D.	N.D.	P	/	/	/	/	/	/	/	P
27-6	Internal wiring-Terminal sheath 3	N.D.	N.D.	N.D.	N.D.	N.D.	P	/	/	/	/	/	/	/	P
27-7	Internal wiring-Black trunking	N.D.	N.D.	N.D.	N.D.	N.D.	P	/	/	/	/	/	/	/	P
27-8	Cable tie 1-yellow plastic	N.D.	N.D.	N.D.	N.D.	N.D.	P	/	/	/	/	/	/	/	P
27-9	Internal wiring-White connector	N.D.	N.D.	N.D.	N.D.	N.D.	P	/	/	/	/	/	/	/	P
27-10	Cable tie 2-white plastic	N.D.	N.D.	N.D.	N.D.	N.D.	P	/	/	/	/	/	/	/	P
27-11	Internal wiring-Substrate of metal insert 1	N.D.	N.D.	N.D.	N.D.	—	P	/	/	/	/	/	/	/	P
27-12	Internal wiring-Plating of metal insert 1	N.D.	N.D.	N.D.	N.D.	—	P	/	/	/	/	/	/	/	P

No.	Test Sample:	Screening Result						Verification Test Result							Verdict
		Pb	Cd	Hg	Cr	Br	Verdict	Pb	Cd	Hg	(Cr VI)		PBBs	PBDEs	
											1000 (d)	0.02 (e)			
Requirement (mg/kg)	b)	b)	b)	b)	b)		1000	100	1000	1000	1000	1000	1000		
MDL (mg/kg)	10	10	10	10	10		5	5	5	5	5	50	50		
27-13	Internal wiring-Substrate of metal insert 2	N.D.	N.D.	N.D.	N.D.	—	P	/	/	/	/	/	/	/	P
27-14	Internal wiring-Plating of metal insert 2	N.D.	N.D.	N.D.	N.D.	—	P	/	/	/	/	/	/	/	P
27-15	Internal wiring-Substrate of metal insert 3	N.D.	N.D.	N.D.	N.D.	—	P	/	/	/	/	/	/	/	P
27-16	Internal wiring-Plating of metal insert 3	N.D.	N.D.	N.D.	N.D.	—	P	/	/	/	/	/	/	/	P
27-17	Internal wiring-Substrate of metal insert 4	N.D.	N.D.	N.D.	N.D.	—	P	/	/	/	/	/	/	/	P
27-18	Internal wiring-Plating of metal insert 4	N.D.	N.D.	N.D.	N.D.	—	P	/	/	/	/	/	/	/	P
27-19	Heat-shrinkable T bush 1	N.D.	N.D.	N.D.	N.D.	N.D.	P	/	/	/	/	/	/	/	P
27-20	Internal wiring-Substrate of metal cord	N.D.	N.D.	N.D.	N.D.	—	P	/	/	/	/	/	/	/	P

No.	Test Sample:	Screening Result					Verdict	Verification Test Result						Verdict	
		Pb	Cd	Hg	Cr	Br		Pb	Cd	Hg	(Cr VI)		PBBs		PBDEs
											1000 (d)	0.02 (e)			
Requirement (mg/kg)	b)	b)	b)	b)	b)	1000	100	1000	1000	1000	1000	1000	1000		
MDL (mg/kg)	10	10	10	10	10	5	5	5	5	5	50	50			
27-21	Heat-shrinkable T bush 2	N.D.	N.D.	N.D.	N.D.	N.D.	P	/	/	/	/	/	/	/	P
27-22	Internal wiring-Red plastic wire jacket 1	N.D.	N.D.	N.D.	N.D.	N.D.	P	/	/	/	/	/	/	/	P
27-23	Internal wiring-Red plastic wire jacket 2	N.D.	N.D.	N.D.	N.D.	N.D.	P	/	/	/	/	/	/	/	P
27-24	Internal wiring-Electronic component 1	N.D.	N.D.	N.D.	N.D.	N.D.	P	/	/	/	/	/	/	/	P
27-25	Internal wiring-Grey plastic wire jacket	N.D.	N.D.	N.D.	N.D.	N.D.	P	/	/	/	/	/	/	/	P
27-26	Internal wiring-Black plastic wire jacket 1	N.D.	N.D.	N.D.	N.D.	N.D.	P	/	/	/	/	/	/	/	P
27-27	Internal wiring-Black plastic wire jacket 2	N.D.	N.D.	N.D.	N.D.	N.D.	P	/	/	/	/	/	/	/	P
27-28	Internal wiring-Black plastic wire jacket 3	N.D.	N.D.	N.D.	N.D.	N.D.	P	/	/	/	/	/	/	/	P

No.	Test Sample:	Screening Result						Verification Test Result							Verdict
		Pb	Cd	Hg	Cr	Br	Verdict	Pb	Cd	Hg	(Cr VI)		PBBs	PBDEs	
											1000 (d)	0.02 (e)			
Requirement (mg/kg)	b)	b)	b)	b)	b)		1000	100	1000	1000	1000	1000	1000		
MDL (mg/kg)	10	10	10	10	10		5	5	5	5	5	50	50		
27-29	Internal wiring-Green plastic wire jacket	N.D.	N.D.	N.D.	N.D.	N.D.	P	/	/	/	/	/	/	/	P
27-30	Internal wiring-Silver wire 1	N.D.	N.D.	N.D.	N.D.	N.D.	P	/	/	/	/	/	/	/	P
27-31	Internal wiring-Silver wire 2	N.D.	N.D.	N.D.	N.D.	N.D.	P	/	/	/	/	/	/	/	P
27-32	Internal wiring-Blue plastic wire jacket	N.D.	N.D.	N.D.	N.D.	N.D.	P	/	/	/	/	/	/	/	P
27-33	Internal wiring-Brown plastic wire jacket	N.D.	N.D.	N.D.	N.D.	N.D.	P	/	/	/	/	/	/	/	P
27-34	Internal wiring-White connector 1	N.D.	N.D.	N.D.	N.D.	N.D.	P	/	/	/	/	/	/	/	P
27-35	Internal wiring-White connector 2	N.D.	N.D.	N.D.	N.D.	N.D.	P	/	/	/	/	/	/	/	P
27-36	Internal wiring-White connector 3	N.D.	N.D.	N.D.	N.D.	N.D.	P	/	/	/	/	/	/	/	P
27-37	Internal wiring-White connector 4	N.D.	N.D.	N.D.	N.D.	N.D.	P	/	/	/	/	/	/	/	P



No.	Test Sample:	Screening Result						Verification Test Result							Verdict
		Pb	Cd	Hg	Cr	Br	Verdict	Pb	Cd	Hg	(Cr VI)		PBBs	PBDEs	
											1000 (d)	0.02 (e)			
Requirement (mg/kg)	b)	b)	b)	b)	b)		1000	100	1000	1000	1000	1000	1000		
MDL (mg/kg)	10	10	10	10	10		5	5	5	5	5	50	50		
27-38	Internal wiring-White blue plastic wire jacket	N.D.	N.D.	N.D.	N.D.	N.D.	P	/	/	/	/	/	/	/	P
27-39	Internal wiring-White red plastic wire jacket 1	N.D.	N.D.	N.D.	N.D.	N.D.	P	/	/	/	/	/	/	/	P
27-40	Internal wiring-White red plastic wire jacket 2	N.D.	N.D.	N.D.	N.D.	N.D.	P	/	/	/	/	/	/	/	P
27-41	Internal wiring-Electronic component 2	N.D.	N.D.	N.D.	N.D.	N.D.	P	/	/	/	/	/	/	/	P
27-42	Internal wiring-Black plastic wire jacket 4	N.D.	N.D.	N.D.	N.D.	N.D.	P	/	/	/	/	/	/	/	P
27-43	Internal wiring-Black plastic wire jacket 5	N.D.	N.D.	N.D.	N.D.	N.D.	P	/	/	/	/	/	/	/	P
27-44	Internal wiring-Red plastic wire jacket 3	N.D.	N.D.	N.D.	N.D.	N.D.	P	/	/	/	/	/	/	/	P
27-45	PCB-material	N.D.	N.D.	N.D.	N.D.	N.D.	P	/	/	/	/	/	/	/	P

No.	Test Sample:	Screening Result						Verification Test Result							Verdict
		Pb	Cd	Hg	Cr	Br	Verdict	Pb	Cd	Hg	(Cr VI)		PBBs	PBDEs	
											1000 (d)	0.02 (e)			
Requirement (mg/kg)	b)	b)	b)	b)	b)		1000	100	1000	1000	1000	1000	1000		
MDL (mg/kg)	10	10	10	10	10		5	5	5	5	5	50	50		
27-46	PCB-green paint	N.D.	N.D.	N.D.	N.D.	N.D.	P	/	/	/	/	/	/	/	P
27-47	PCB-soldering tin	N.D.	N.D.	N.D.	N.D.	—	P	/	/	/	/	/	/	/	P
27-48	PCB-pin	N.D.	N.D.	N.D.	N.D.	—	P	/	/	/	/	/	/	/	P
27-49	PCB-black plastic sheath	N.D.	N.D.	N.D.	N.D.	N.D.	P	/	/	/	/	/	/	/	P
27-50	PCB-metal sheet	N.D.	N.D.	N.D.	1.6×10 <sup>5</sup>	—	V	/	/	/	N.D.	/	/	/	P
27-51	PCB-chip	N.D.	N.D.	N.D.	N.D.	N.D.	P	/	/	/	/	/	/	/	P
28-1	Speed controller-Substrate of nut	N.D.	N.D.	N.D.	N.D.	—	P	/	/	/	/	/	/	/	P
28-2	Speed controller-Plating of nut	N.D.	N.D.	N.D.	679	—	P	/	/	/	/	/	/	/	P
28-3	Speed controller-Substrate of washer	N.D.	N.D.	N.D.	N.D.	—	P	/	/	/	/	/	/	/	P
28-4	Speed controller-Plating of washer	N.D.	N.D.	N.D.	N.D.	—	P	/	/	/	/	/	/	/	P
28-5	Speed controller-Black plastic washer	N.D.	N.D.	N.D.	N.D.	N.D.	P	/	/	/	/	/	/	/	P
28-6	Speed controller-Metal sheet	N.D.	N.D.	N.D.	N.D.	—	P	/	/	/	/	/	/	/	P

No.	Test Sample:	Screening Result						Verification Test Result							Verdict
		Pb	Cd	Hg	Cr	Br	Verdict	Pb	Cd	Hg	(Cr VI)		PBBs	PBDEs	
											1000 (d)	0.02 (e)			
Requirement (mg/kg)	b)	b)	b)	b)	b)		1000	100	1000	1000	1000	1000	1000		
MDL (mg/kg)	10	10	10	10	10		5	5	5	5	5	50	50		
28-7	Speed controller-White plastic	N.D.	N.D.	N.D.	N.D.	N.D.	P	/	/	/	/	/	/	/	P
28-8	Speed controller-Metal knob pole	N.D.	N.D.	N.D.	N.D.	—	P	/	/	/	/	/	/	/	P
28-9	Speed controller-P-CB	N.D.	N.D.	N.D.	N.D.	N.D.	P	/	/	/	/	/	/	/	P
28-10	Speed controller-Metal cap	N.D.	N.D.	N.D.	N.D.	—	P	/	/	/	/	/	/	/	P
29-1	Screw 1-Substrate of screw 1	N.D.	N.D.	N.D.	N.D.	—	P	/	/	/	/	/	/	/	P
29-2	Screw 1-Plating of screw 1	N.D.	N.D.	N.D.	1.7×10 <sup>5</sup>	—	V	/	/	/	/	Negative	/	/	P
29-3	Screw 1-Black plastic	N.D.	N.D.	N.D.	N.D.	N.D.	P	/	/	/	/	/	/	/	P
29-4	Screw 1-magnet	N.D.	N.D.	N.D.	N.D.	—	P	/	/	/	/	/	/	/	P
30-1	Screw 2-Substrate of screw 2	N.D.	N.D.	N.D.	N.D.	—	P	/	/	/	/	/	/	/	P
30-2	Screw 2-Plating of screw 2	N.D.	N.D.	N.D.	625	—	P	/	/	/	/	/	/	/	P
30-3	Screw 2-Substrate of gasket 1	N.D.	N.D.	N.D.	N.D.	—	P	/	/	/	/	/	/	/	P

No.	Test Sample:	Screening Result						Verification Test Result							Verdict
		Pb	Cd	Hg	Cr	Br	Verdict	Pb	Cd	Hg	(Cr VI)		PBBs	PBDEs	
											1000 (d)	0.02 (e)			
Requirement (mg/kg)	b)	b)	b)	b)	b)		1000	100	1000	1000	1000	1000	1000		
MDL (mg/kg)	10	10	10	10	10		5	5	5	5	5	50	50		
30-4	Screw 2-Plating of gasket 1	N.D.	N.D.	N.D.	519	—	P	/	/	/	/	/	/	/	P
31-1	Screw 3-Substrate of screw 3	N.D.	N.D.	N.D.	N.D.	—	P	/	/	/	/	/	/	/	P
31-2	Screw 3-Plating of screw 3	N.D.	N.D.	N.D.	1.8×10 <sup>5</sup>	—	V	/	/	/	/	Negative	/	/	P
32-1	Screw 3-Substrate of screw 4	N.D.	N.D.	N.D.	N.D.	—	P	/	/	/	/	/	/	/	P
32-2	Screw 3-Plating of screw 4	N.D.	N.D.	N.D.	1168	—	V	/	/	/	/	Negative	/	/	P
33-1	Screw 3-Substrate of screw 5	N.D.	N.D.	N.D.	N.D.	—	P	/	/	/	/	/	/	/	P
33-2	Screw 3-Plating of screw 5	N.D.	N.D.	N.D.	588	—	P	/	/	/	/	/	/	/	P
34-1	Screw 3-Substrate of screw 6	N.D.	N.D.	N.D.	N.D.	—	P	/	/	/	/	/	/	/	P
34-2	Screw 3-Plating of screw 6	N.D.	N.D.	N.D.	N.D.	—	P	/	/	/	/	/	/	/	P
35-1	Screw 3-Substrate of screw 7	N.D.	N.D.	N.D.	N.D.	—	P	/	/	/	/	/	/	/	P
35-2	Screw 3-Plating of screw 7	N.D.	N.D.	N.D.	1244	—	V	/	/	/	/	Negative	/	/	P
36-1	Screw 3-Substrate of screw 8	N.D.	N.D.	N.D.	N.D.	—	P	/	/	/	/	/	/	/	P

No.	Test Sample:	Screening Result						Verification Test Result							Verdict
		Pb	Cd	Hg	Cr	Br	Verdict	Pb	Cd	Hg	(Cr VI)		PBBs	PBDEs	
											1000 (d)	0.02 (e)			
Requirement (mg/kg)	b)	b)	b)	b)	b)		1000	100	1000	1000	1000	1000	1000		
MDL (mg/kg)	10	10	10	10	10		5	5	5	5	5	50	50		
36-2	Screw 3-Plating of screw 8	N.D.	N.D.	N.D.	1.8×10 <sup>5</sup>	—	V	/	/	/	/	Negative	/	/	P
37-1	Screw 3-Substrate of screw 9	N.D.	N.D.	N.D.	N.D.	—	P	/	/	/	/	/	/	/	P
37-2	Screw 3-Plating of screw 9	N.D.	N.D.	N.D.	N.D.	—	P	/	/	/	/	/	/	/	P
38-1	Screw 3-Substrate of screw 10	N.D.	N.D.	N.D.	N.D.	—	P	/	/	/	/	/	/	/	P
38-2	Screw 3-Plating of screw 10	N.D.	N.D.	N.D.	1.7×10 <sup>5</sup>	—	V	/	/	/	/	Negative	/	/	P
39-1	Screw 3-Substrate of screw 11	N.D.	N.D.	N.D.	N.D.	—	P	/	/	/	/	/	/	/	P
39-2	Screw 3-Plating of screw 11	N.D.	N.D.	N.D.	N.D.	—	P	/	/	/	/	/	/	/	P
40-1	Gasket 1-Substrate of gasket 1	N.D.	N.D.	N.D.	N.D.	—	P	/	/	/	/	/	/	/	P
40-2	Gasket 1-Plating of gasket 1	N.D.	N.D.	N.D.	1047	—	V	/	/	/	/	Negative	/	/	P
41-1	Cable tie-black plastic jacket	N.D.	N.D.	N.D.	N.D.	N.D.	P	/	/	/	/	/	/	/	P
41-2	Cable tie-iron wire	N.D.	N.D.	N.D.	N.D.	—	P	/	/	/	/	/	/	/	P
41-3	Plug sheath-white plastic	N.D.	N.D.	N.D.	N.D.	N.D.	P	/	/	/	/	/	/	/	P

No.	Test Sample:	Screening Result						Verification Test Result							Verdict
		Pb	Cd	Hg	Cr	Br	Verdict	Pb	Cd	Hg	(Cr VI)		PBBs	PBDEs	
											1000 (d)	0.02 (e)			
Requirement (mg/kg)	b)	b)	b)	b)	b)		1000	100	1000	1000	1000	1000	1000		
MDL (mg/kg)	10	10	10	10	10		5	5	5	5	5	50	50		
41-4	Power cord-Copper wire	N.D.	N.D.	N.D.	N.D.	—	P	/	/	/	/	/	/	/	P
41-5	Power cord-Black plastic wire jacket	N.D.	N.D.	N.D.	N.D.	N.D.	P	/	/	/	/	/	/	/	P
41-6	Power cord-Blue plastic wire jacket	N.D.	N.D.	N.D.	N.D.	N.D.	P	/	/	/	/	/	/	/	P
41-7	Power cord-Yellow green plastic wire jacket	N.D.	N.D.	N.D.	N.D.	N.D.	P	/	/	/	/	/	/	/	P
41-8	Power cord-Brown plastic wire jacket	N.D.	N.D.	N.D.	N.D.	N.D.	P	/	/	/	/	/	/	/	P
41-9	Coupler-black plastic jacket	N.D.	N.D.	N.D.	N.D.	N.D.	P	/	/	/	/	/	/	/	P
41-10	Coupler-black plastic inner	N.D.	N.D.	N.D.	N.D.	N.D.	P	/	/	/	/	/	/	/	P
41-11	Coupler-metal	N.D.	N.D.	N.D.	N.D.	—	P	/	/	/	/	/	/	/	P
41-12	Power cord-Substrate of plug	N.D.	N.D.	N.D.	N.D.	—	P	/	/	/	/	/	/	/	P
41-13	Power cord-Plating of plug	N.D.	N.D.	N.D.	N.D.	—	P	/	/	/	/	/	/	/	P

No.	Test Sample:	Screening Result						Verification Test Result						Verdict	
		Pb	Cd	Hg	Cr	Br	Verdict	Pb	Cd	Hg	(Cr VI)		PBBs		PBDEs
											1000 (d)	0.02 (e)			
Requirement (mg/kg)		b)	b)	b)	b)	b)		1000	100	1000	1000	1000	1000	1000	
MDL (mg/kg)		10	10	10	10	10		5	5	5	5	5	50	50	
41-14	Power cord-Inner bracket of plug	N.D.	N.D.	N.D.	N.D.	N.D.	P	/	/	/	/	/	/	/	P
41-15	Plug-black plastic jacket	N.D.	N.D.	N.D.	N.D.	N.D.	P	/	/	/	/	/	/	/	P

Remarks: a) Screening results, "P" means "Pass", "F" means "Fail", "V" means "the need for chemical confirmation."  
 b) XRF Screening limits scope: Pb:  $P \leq 700 < V < 1300 \leq F$ ; Cd:  $P \leq 70 < V < 130 \leq F$ ; Hg:  $P \leq 700 < V < 1300 \leq F$ ; Cr:  $P \leq 700 < V$ ; Br:  $P \leq 300 < V$ ; XRF does not apply to the direct determination of hexavalent chromium plating.  
 c) "N.D." means "Not Detected"; "/" means "untested"; "—" means "not applicable"  
 d) It is the hexavalent chromium limit of Metal substrates or non-metallic materials.  
 e) It is the hexavalent chromium limit of metal plating.  
 "Negative" means "the Cr(VI) concentration is less than  $0.10 \mu\text{g}/\text{cm}^2$ "; "Positive" means the Cr(VI) concentration detected in the boiling water extraction solution is equal to or greater than  $0.13 \mu\text{g}/\text{cm}^2$  with a sample surface area of  $50 \text{ cm}^2$  used.  
 f) Test result of this report refers to CNRS2017-0150 but test conclusion according as Directive 2011/65/EU (RoHS).  
 "▲1": according to the 2011 /65 /EU Appendix III section 8 (b), cadmium and its compounds in electrical contacts can be exempted.  
 "▲2": according to the 2011 /65 /EU Appendix III section 7 (c)- I, Electrical and electronic components containing lead in a glass or ceramic other than dielectric ceramic in capacitors, e.g. piezoelectronic devices, or in a glass or ceramic matrix compound can be exempted.





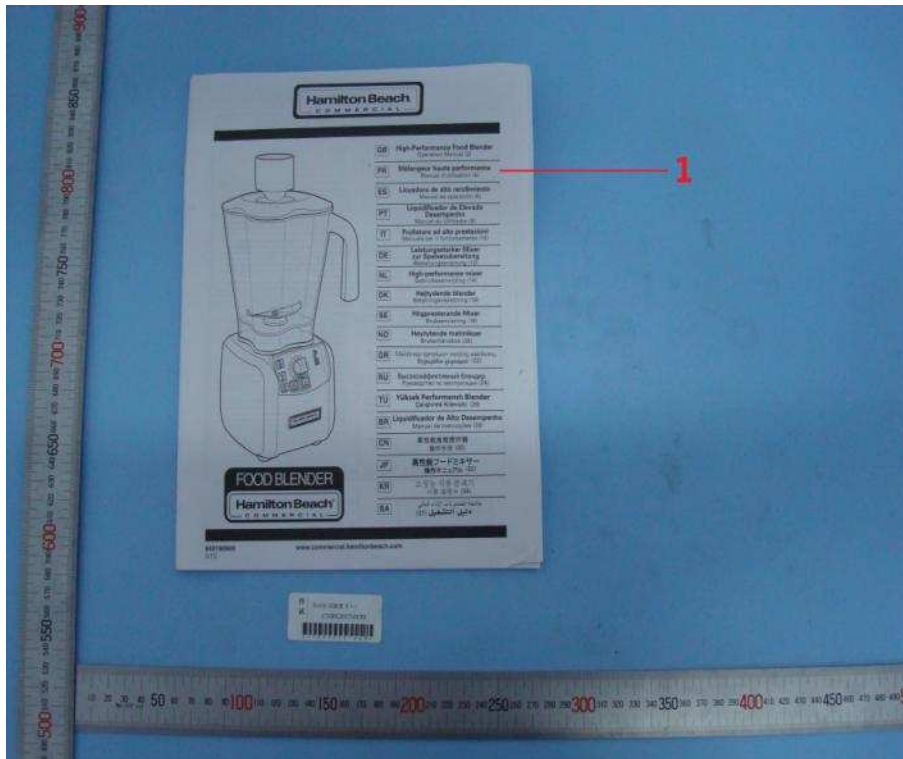
### Sample Photo



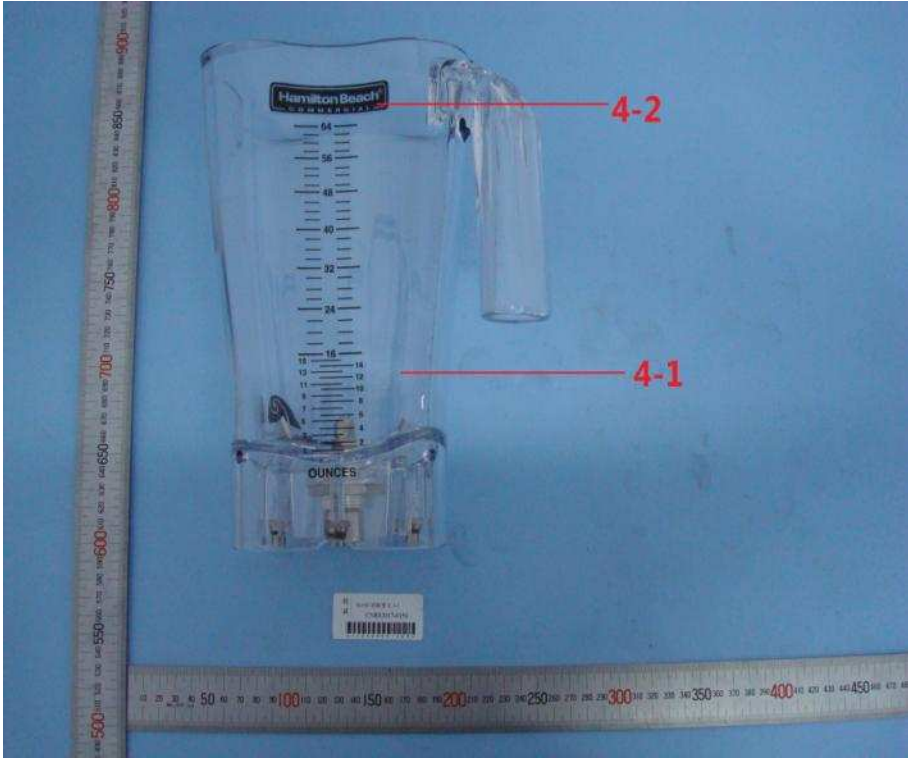
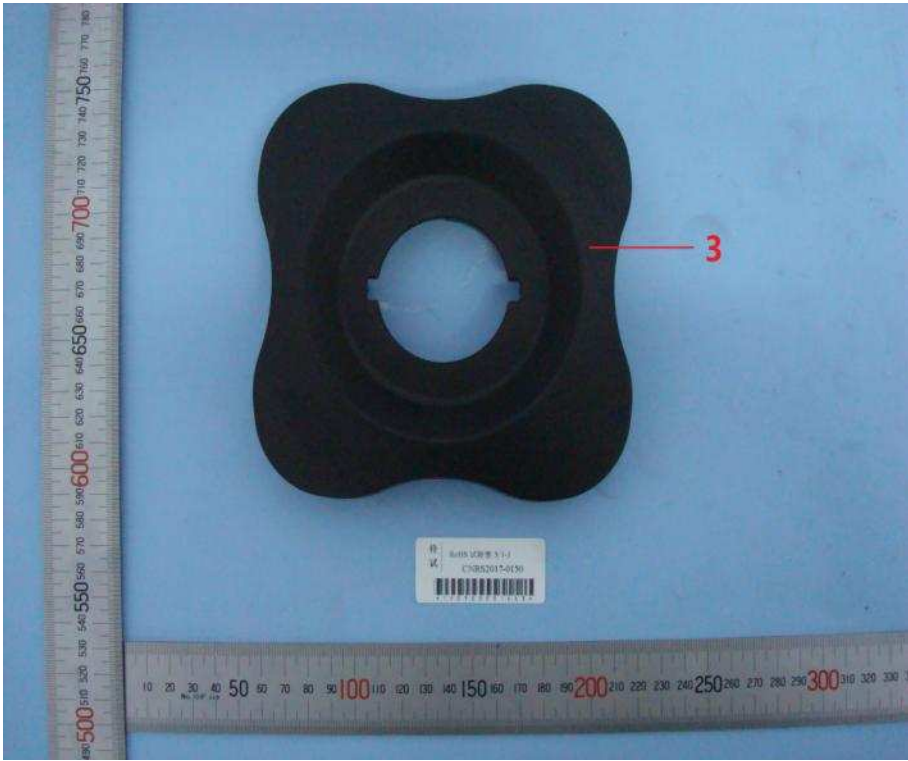
Test type: HBF600\*-YYY ( \* is blank or 1-2 characters to represent the customer,YYY is 2-3 characters to represent the country or region. )

Remarks: —

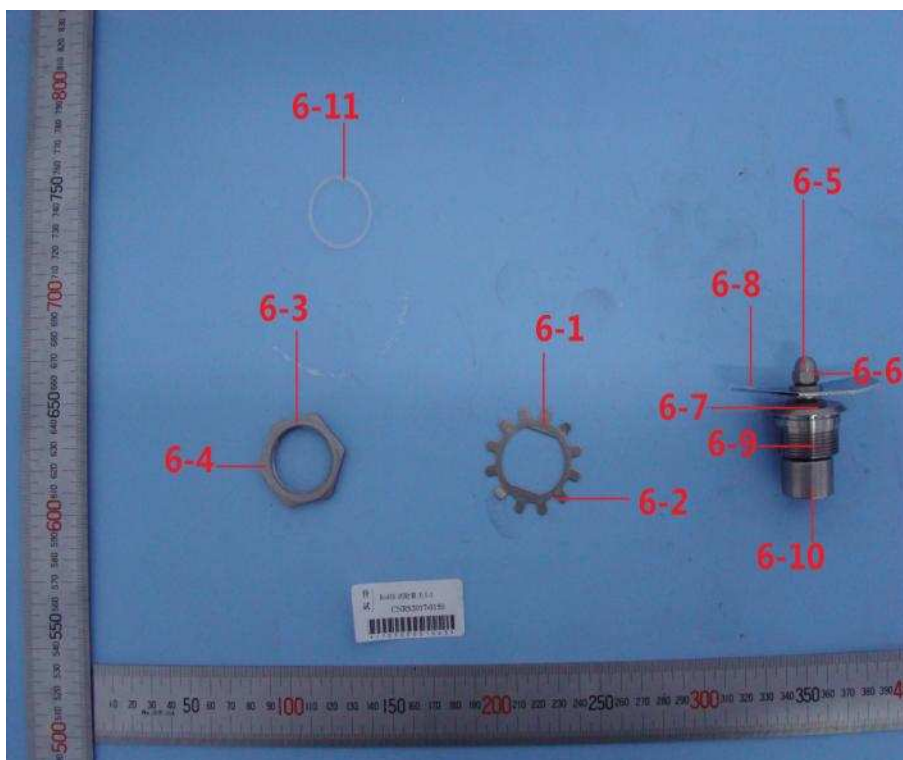
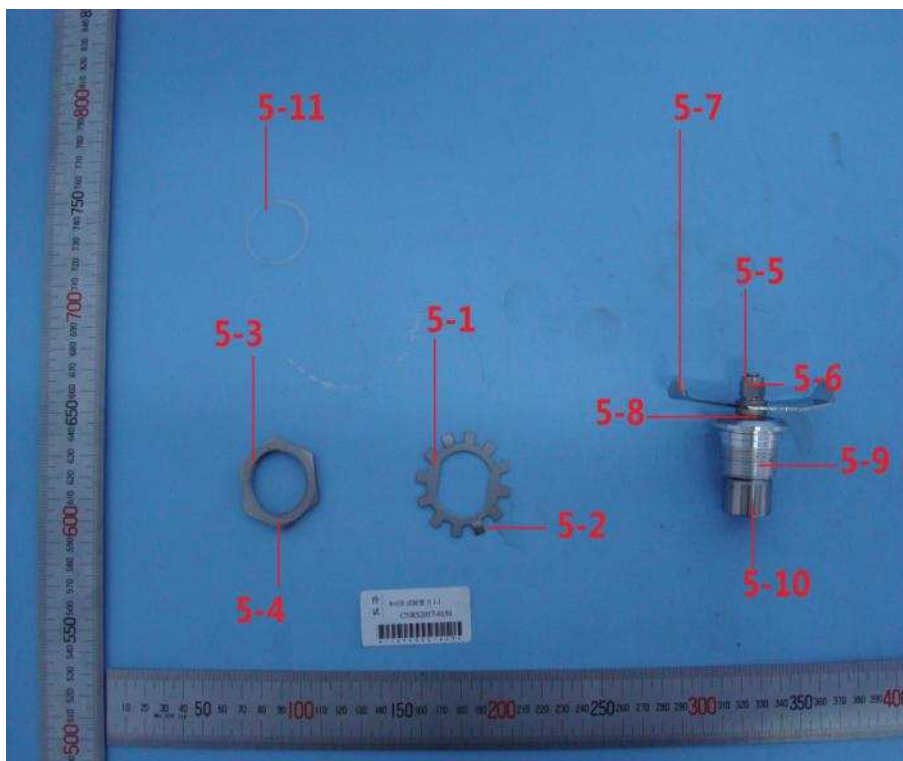
# Parts Photo



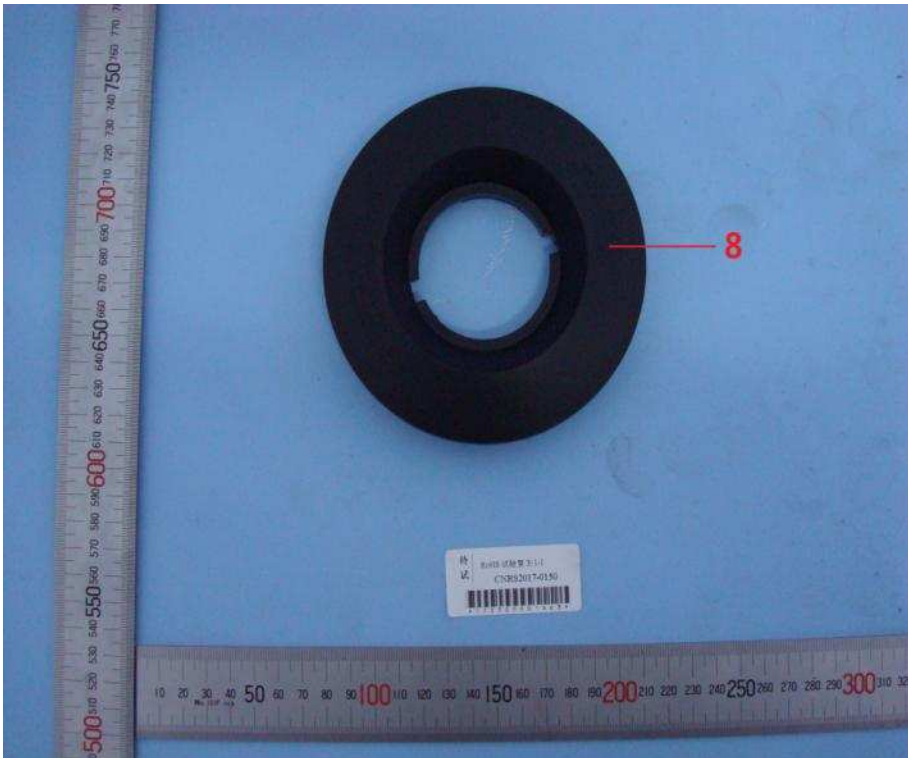
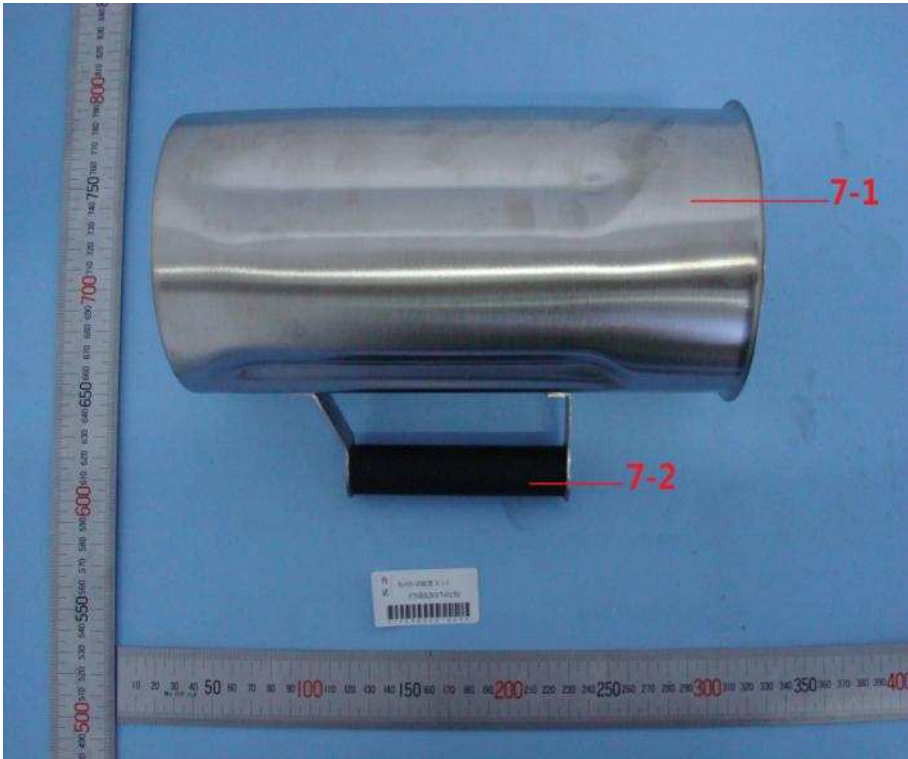
# Parts Photo



# Parts Photo



# Parts Photo



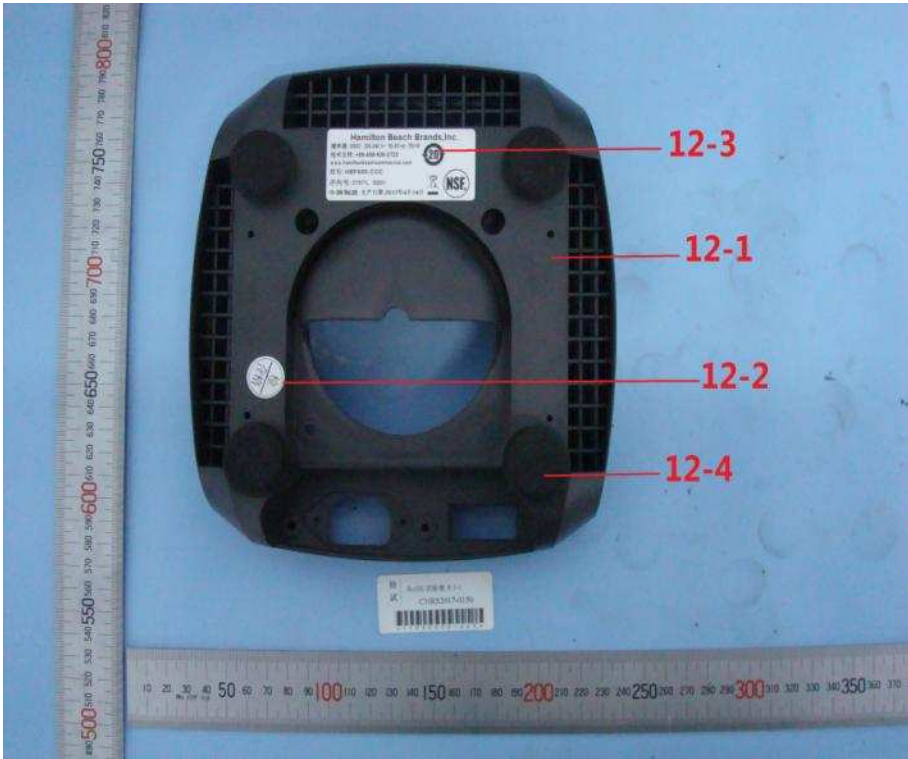
# Parts Photo



# Parts Photo

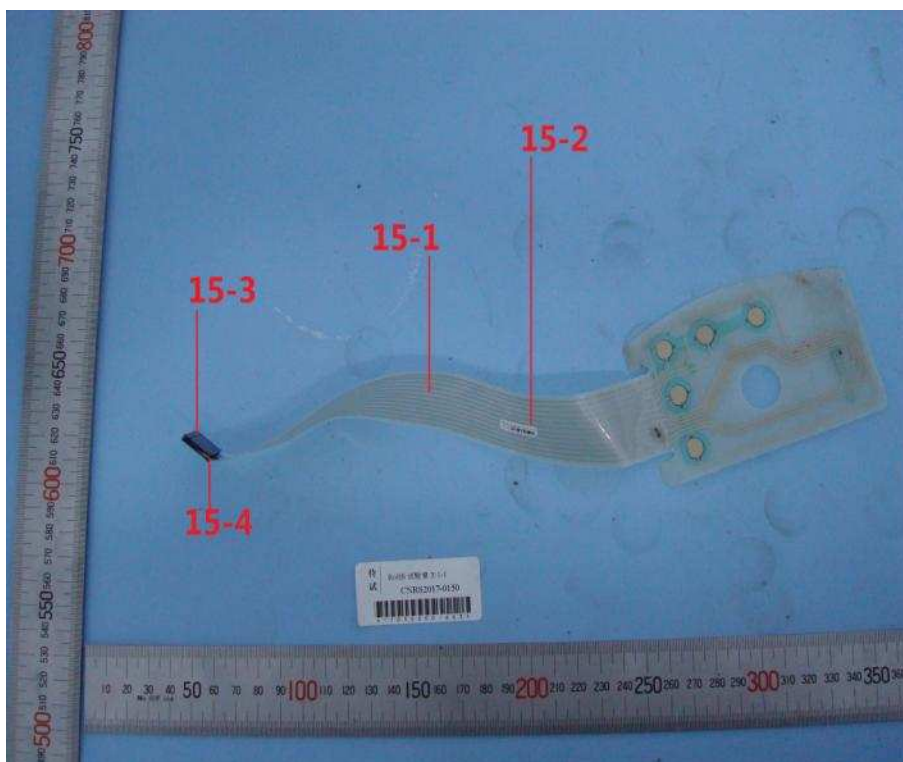
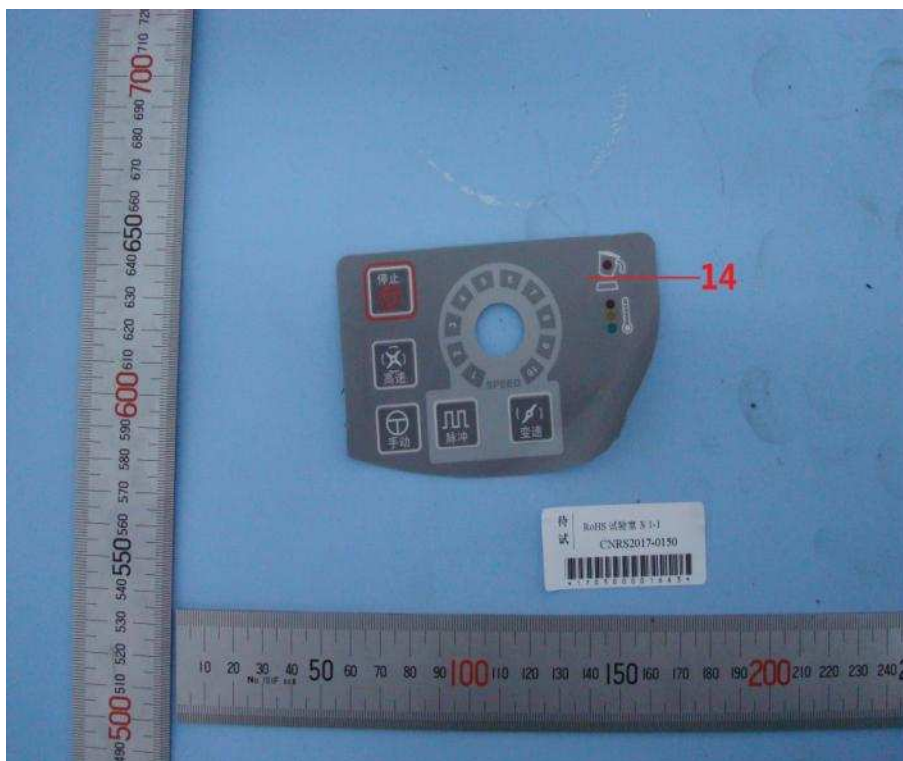


# Parts Photo

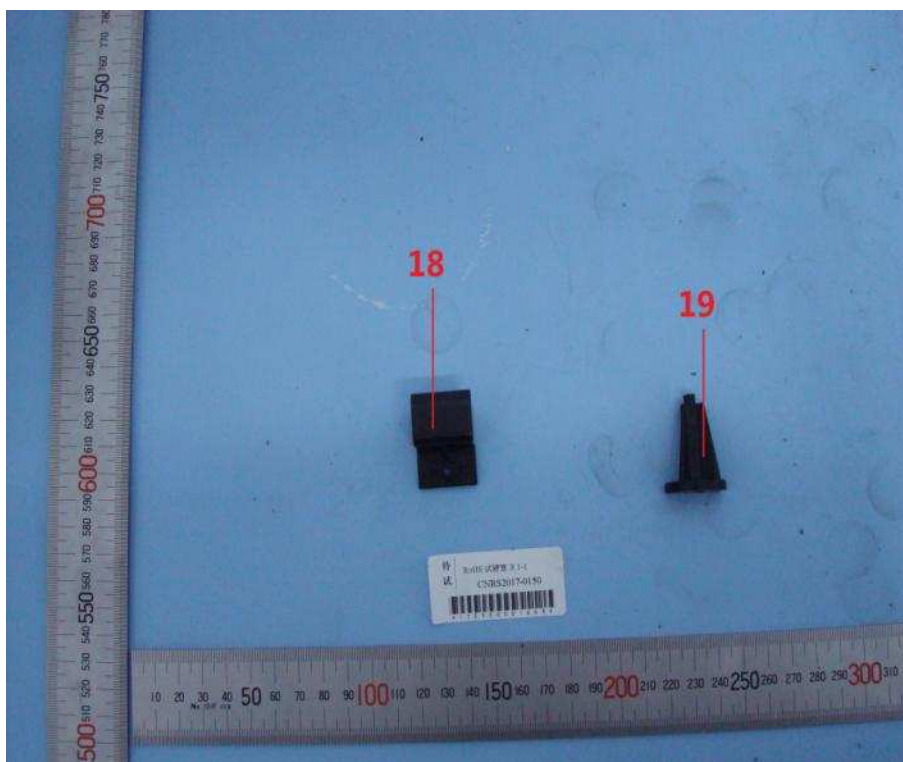
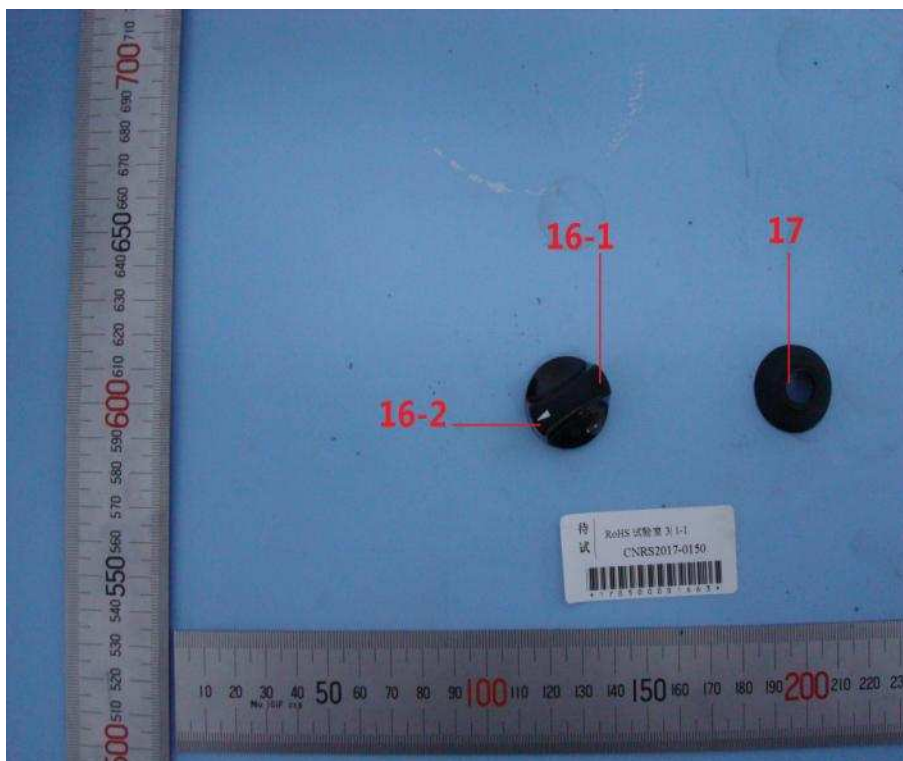




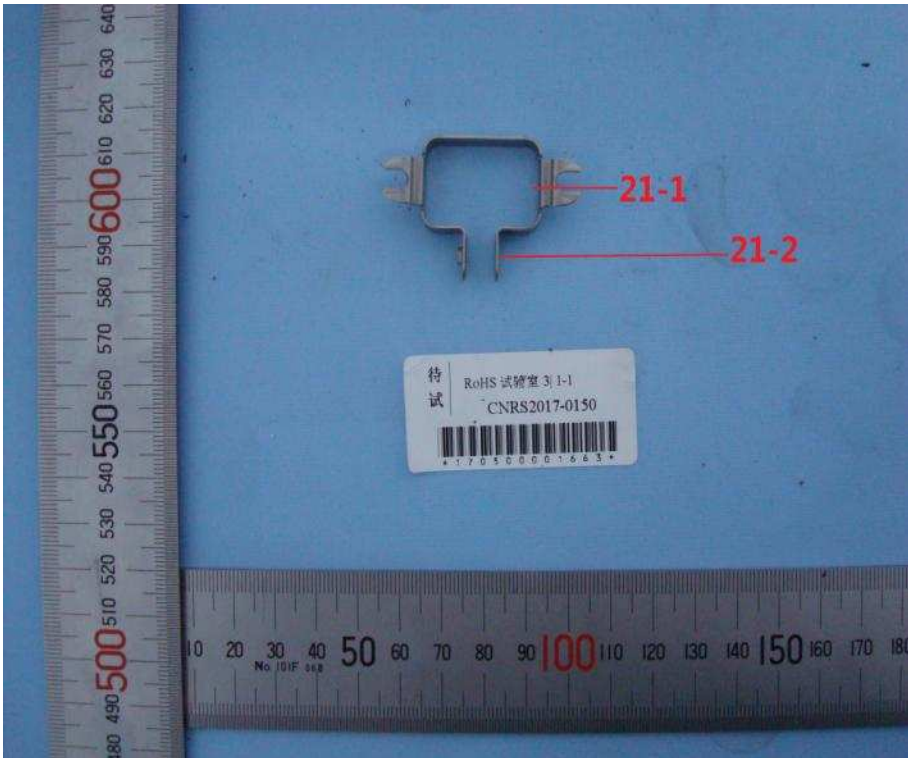
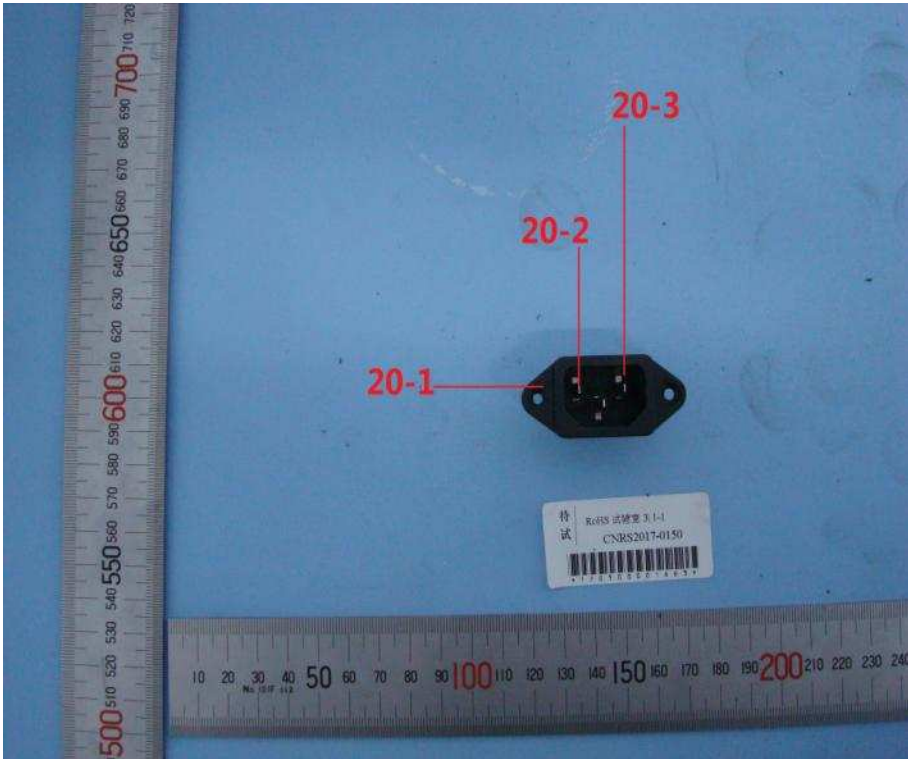
# Parts Photo



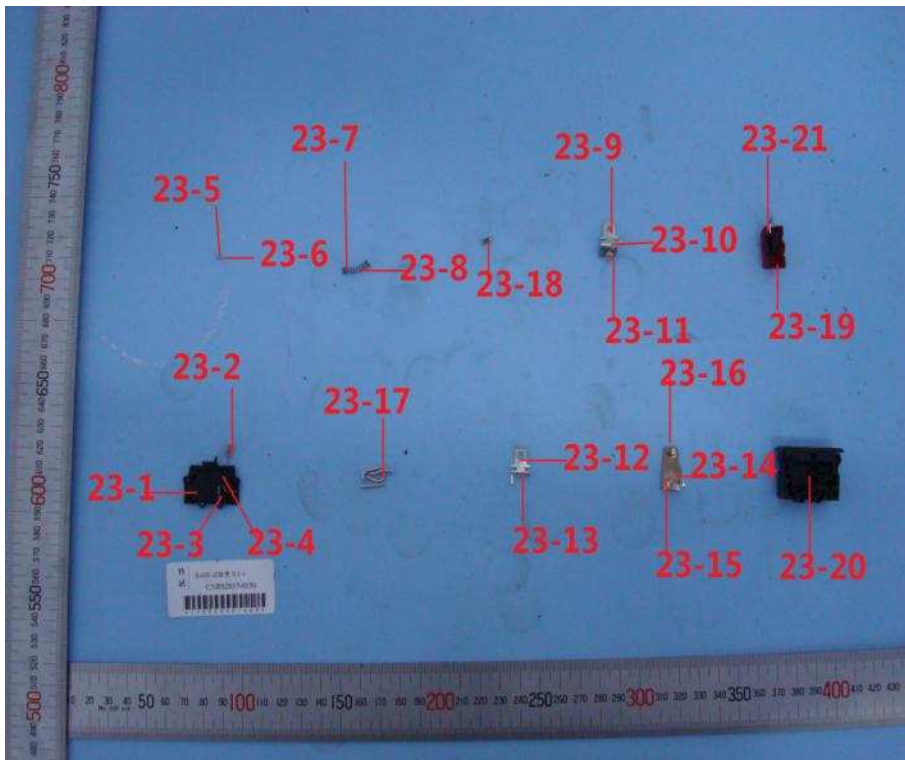
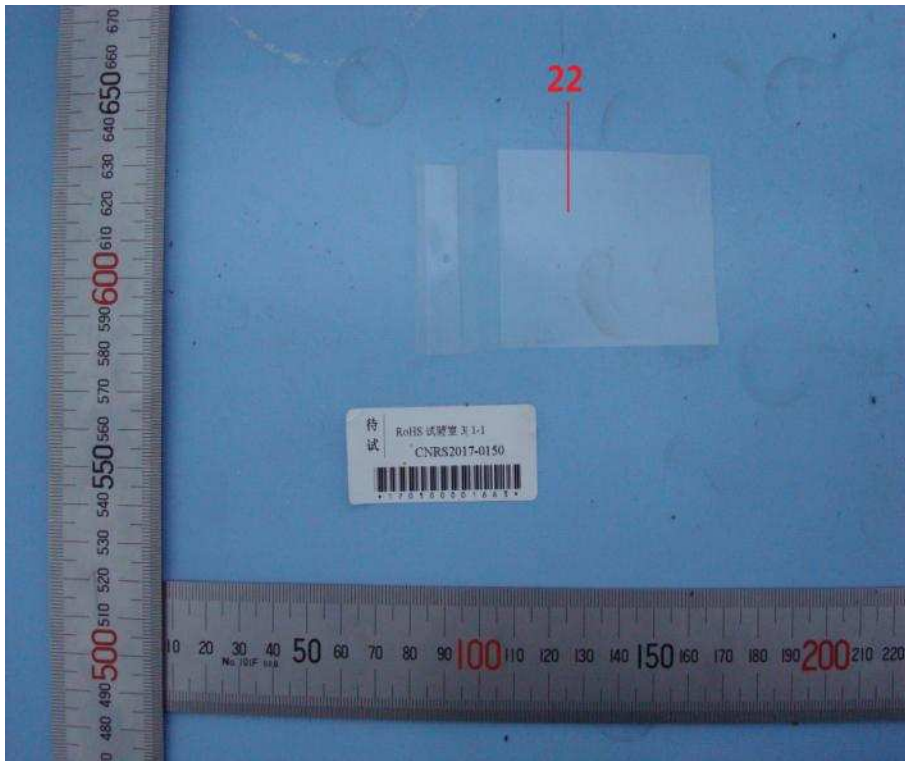
# Parts Photo



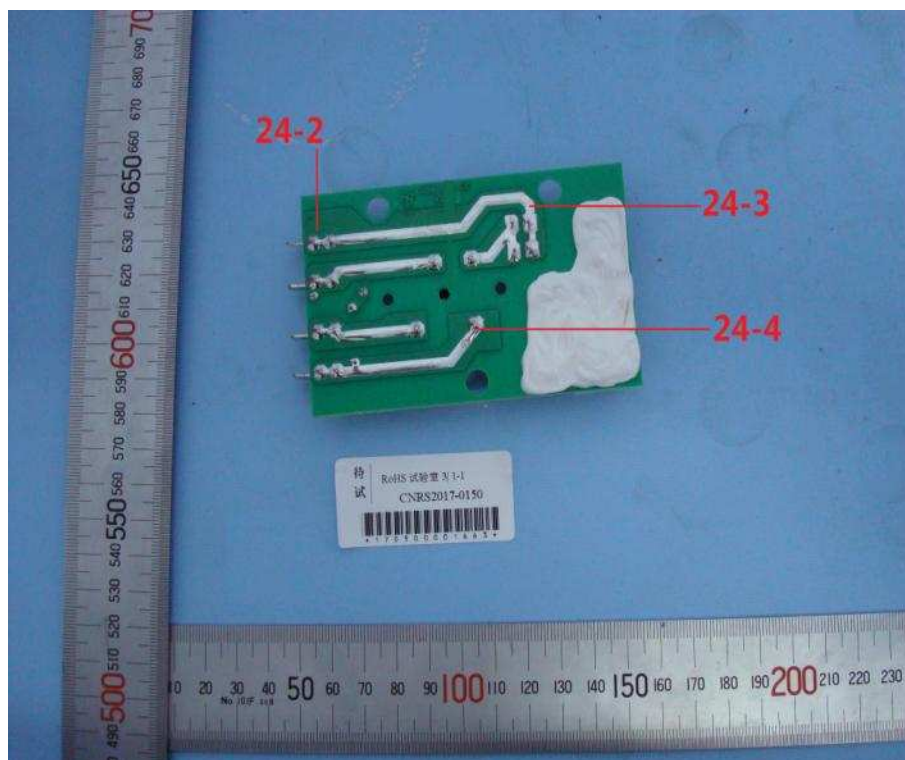
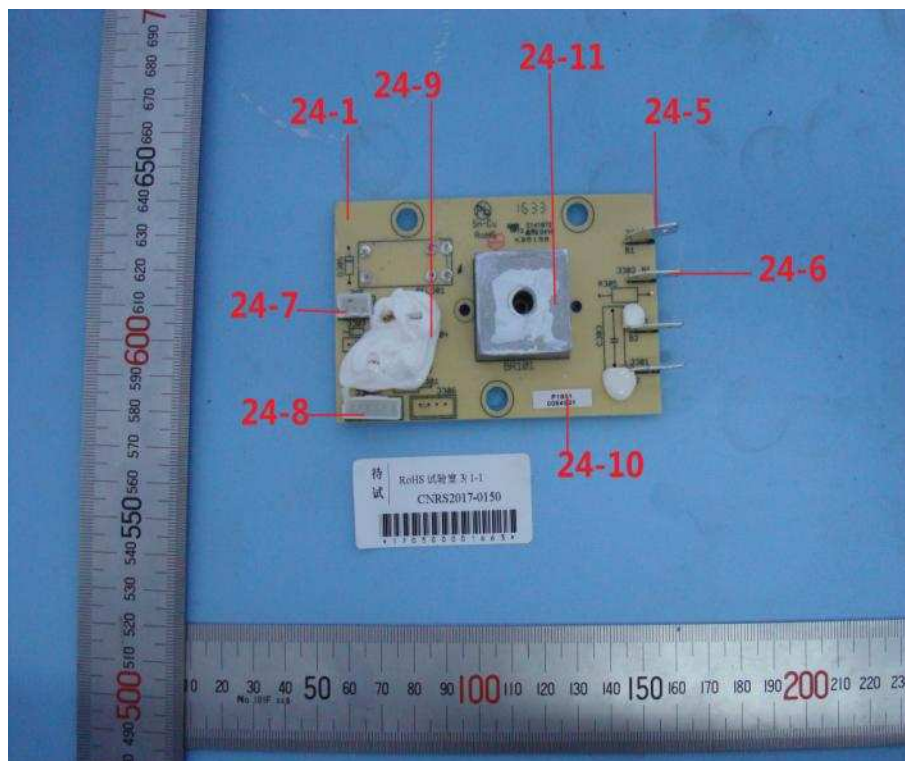
# Parts Photo



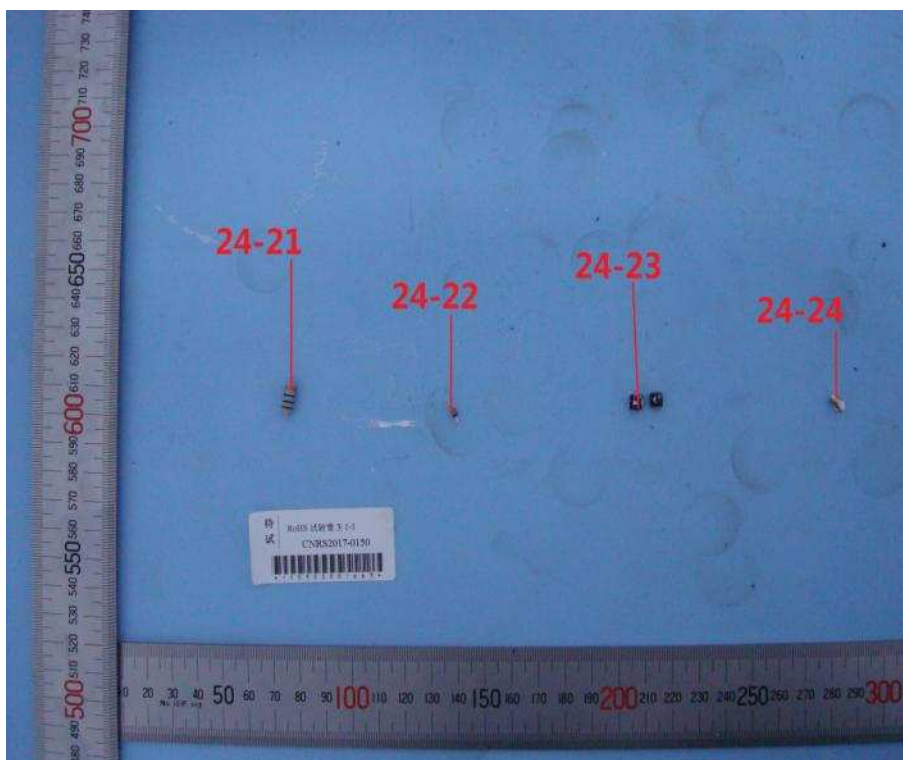
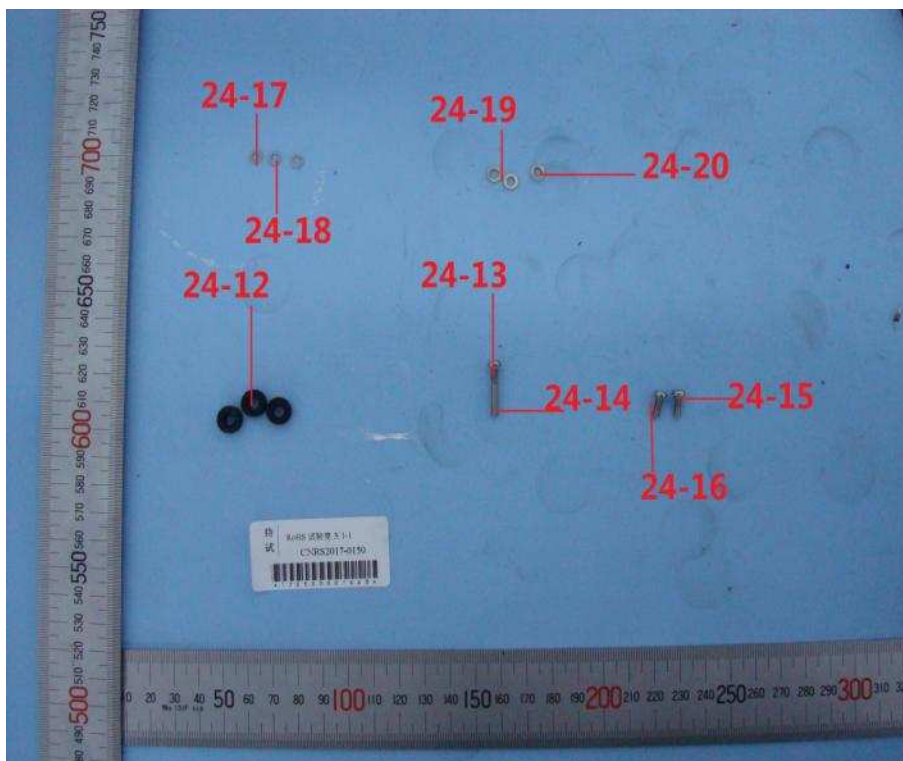
# Parts Photo



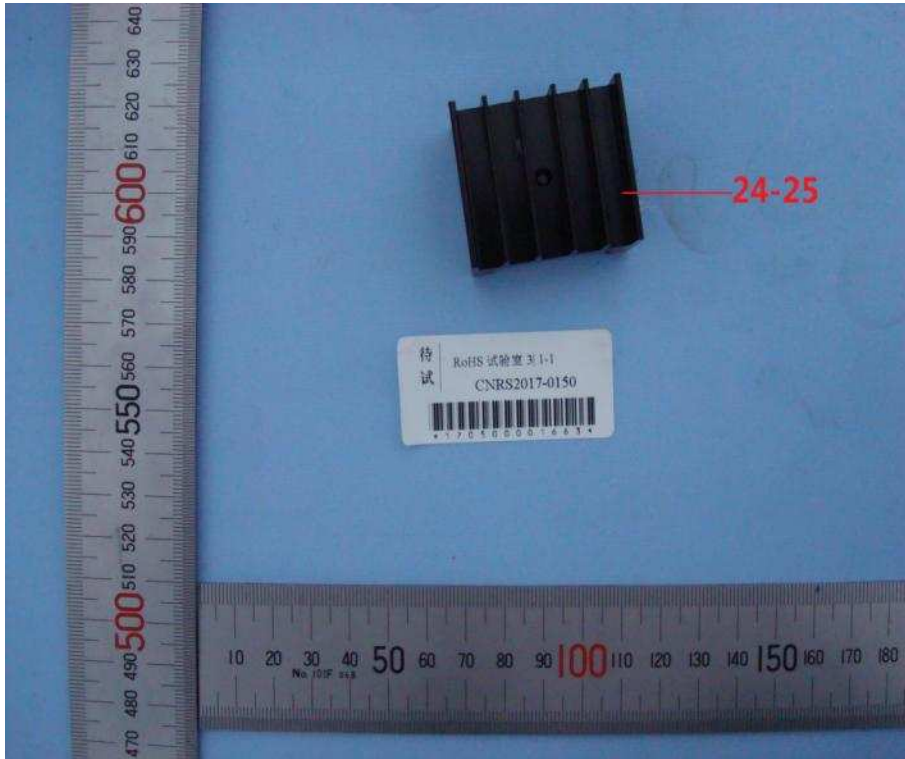
# Parts Photo



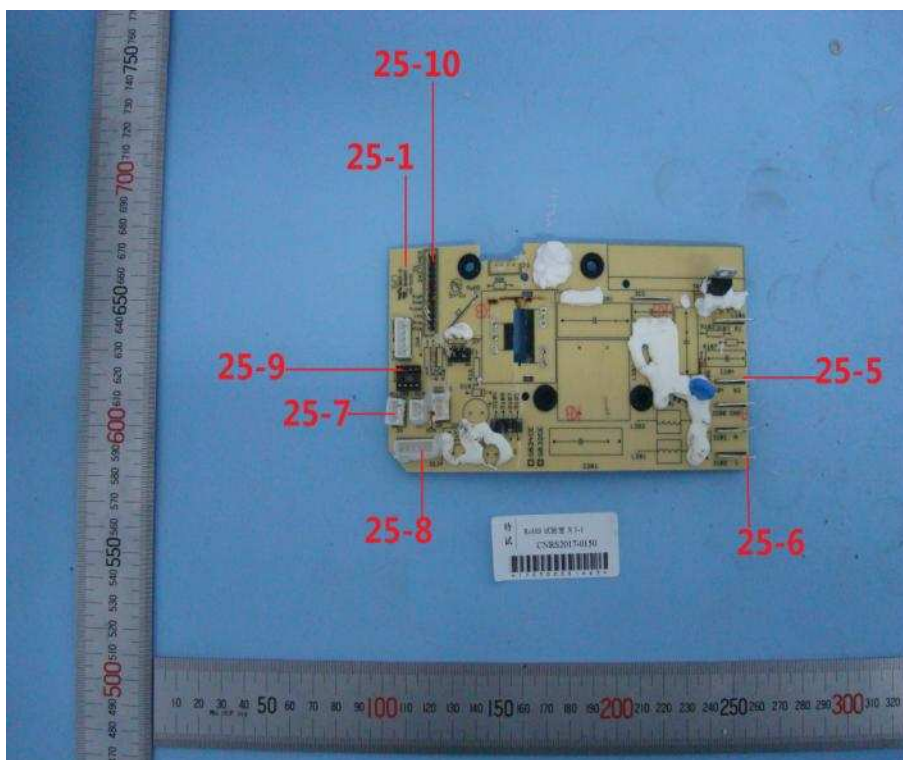
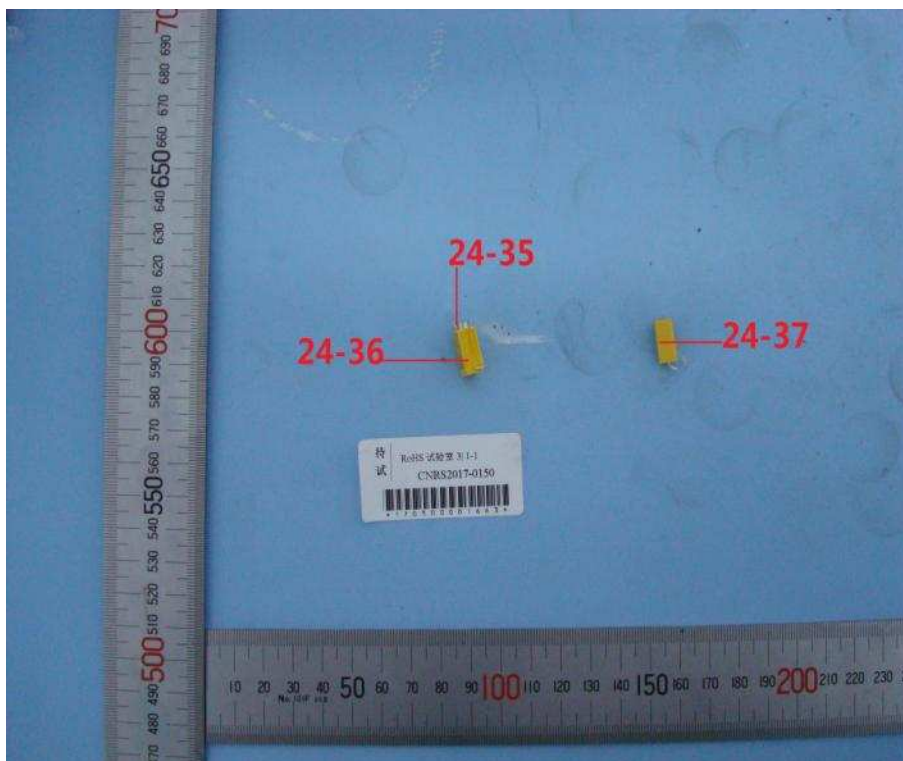
# Parts Photo



# Parts Photo

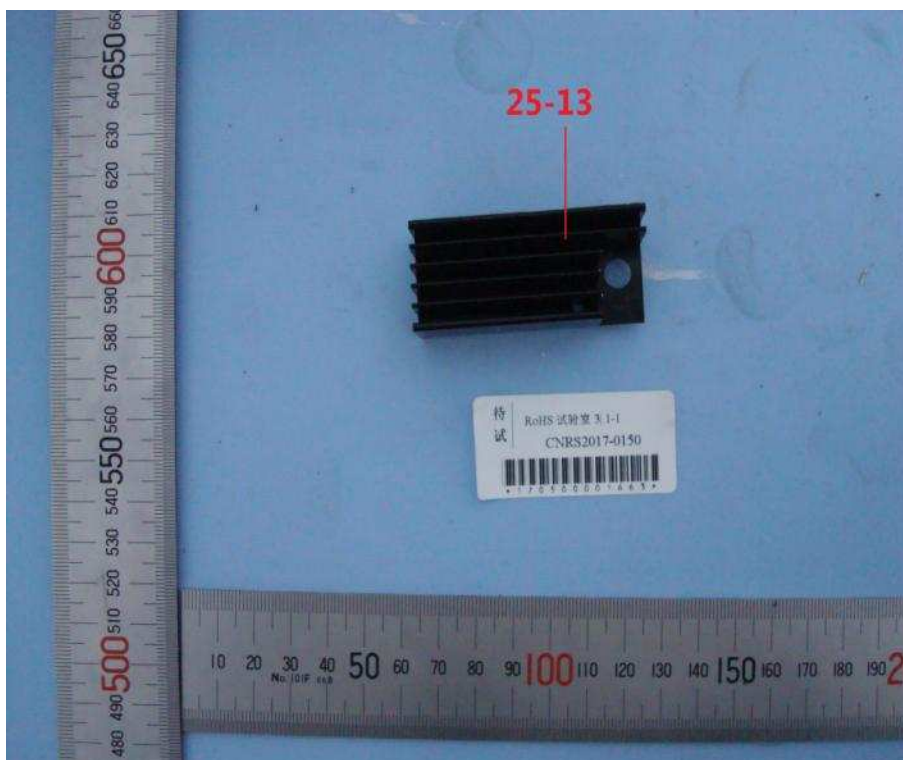
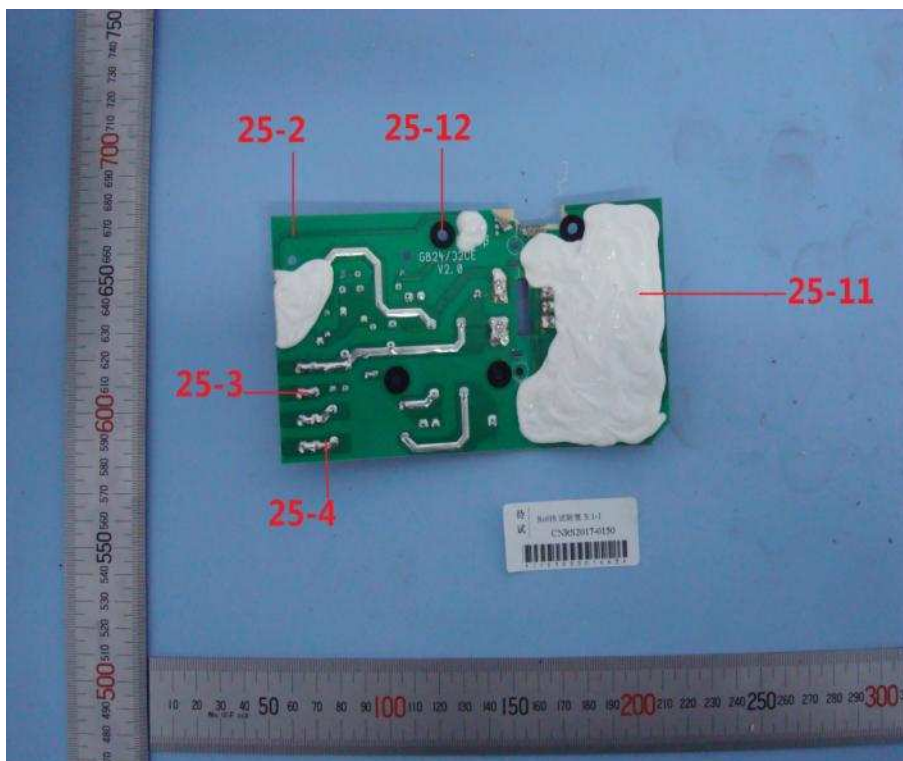


# Parts Photo

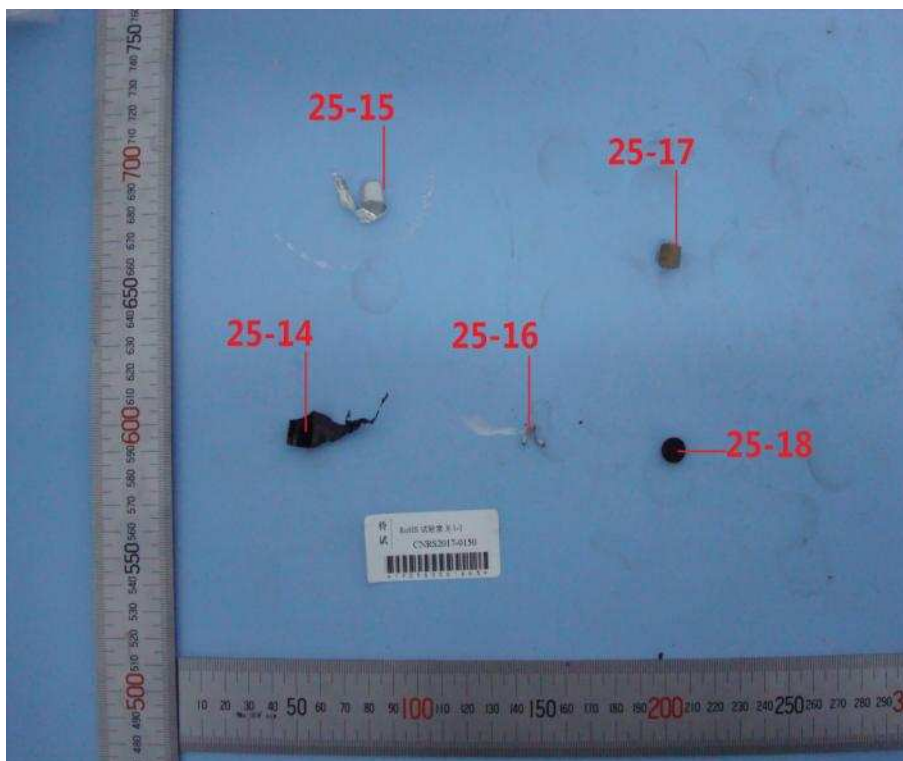




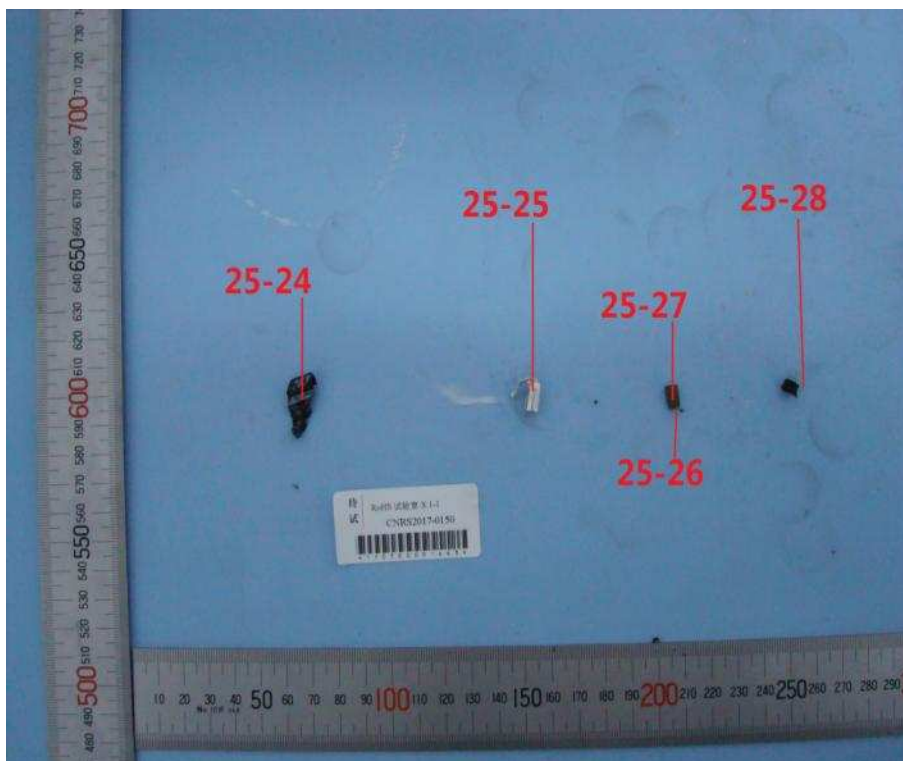
# Parts Photo



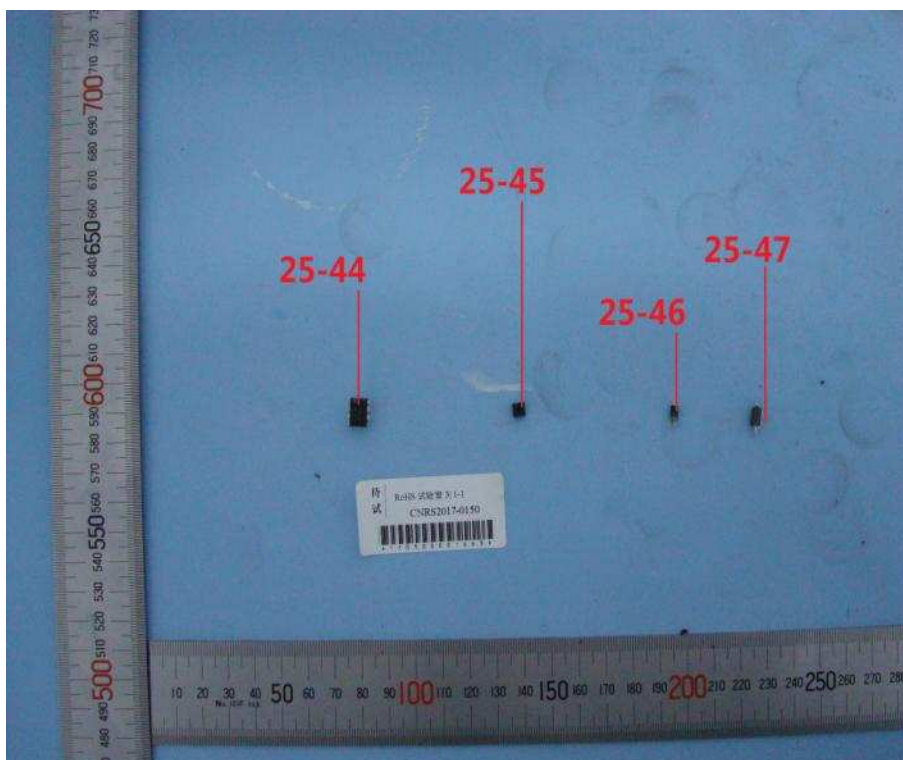
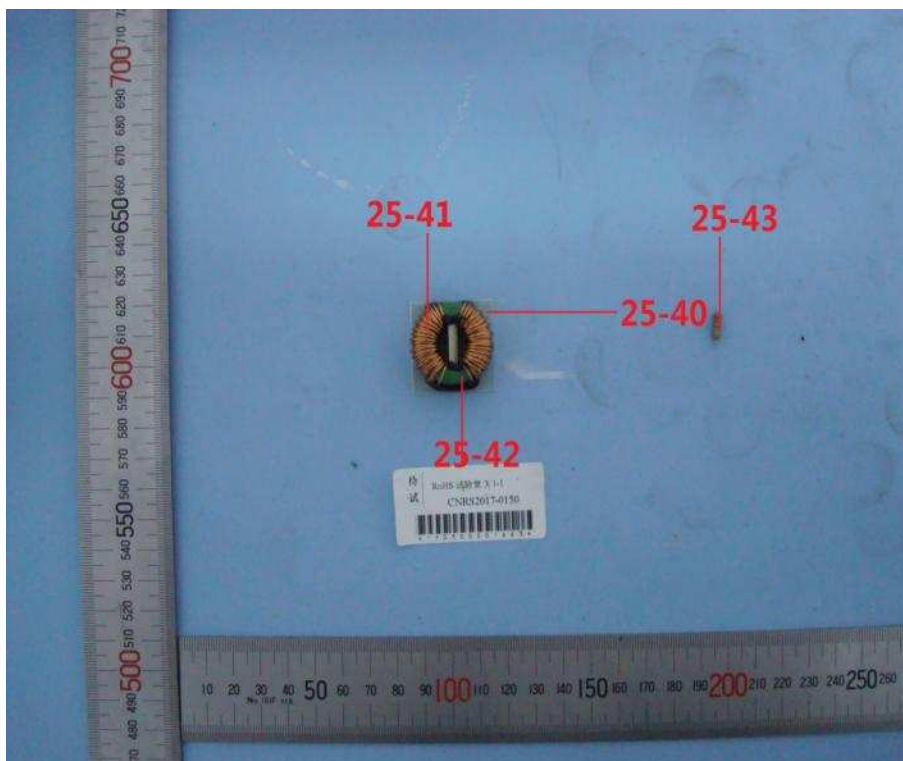
# Parts Photo



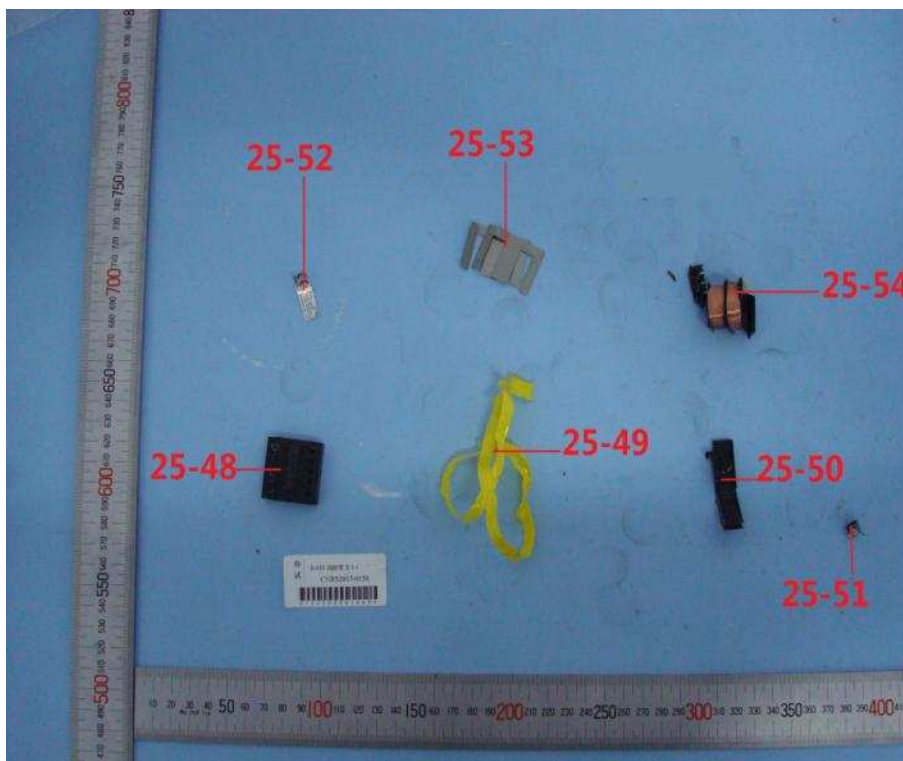
# Parts Photo



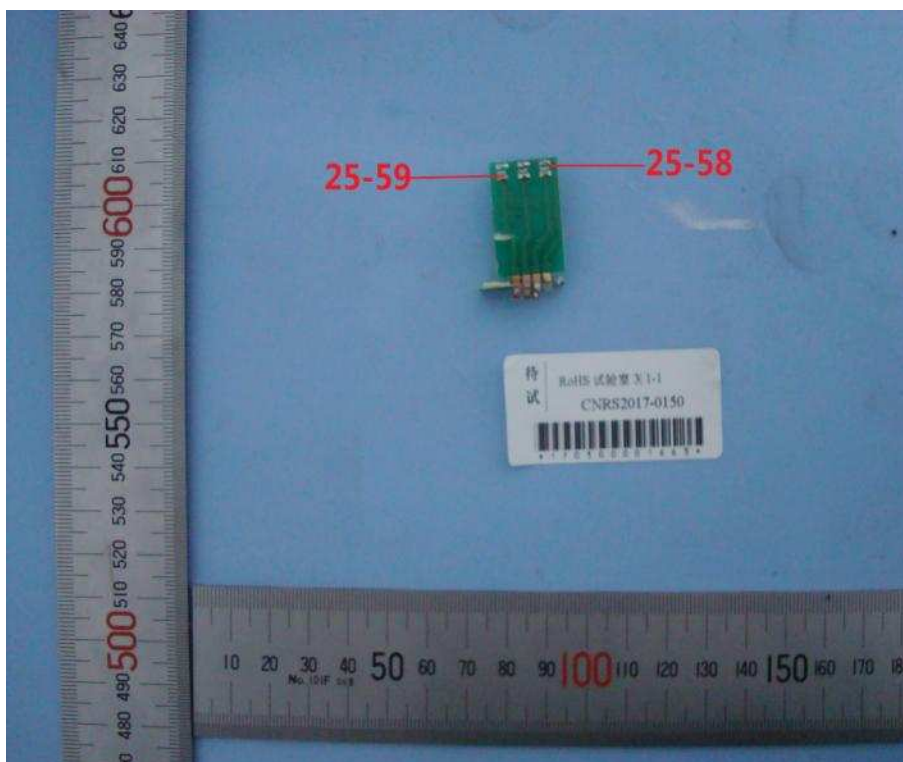
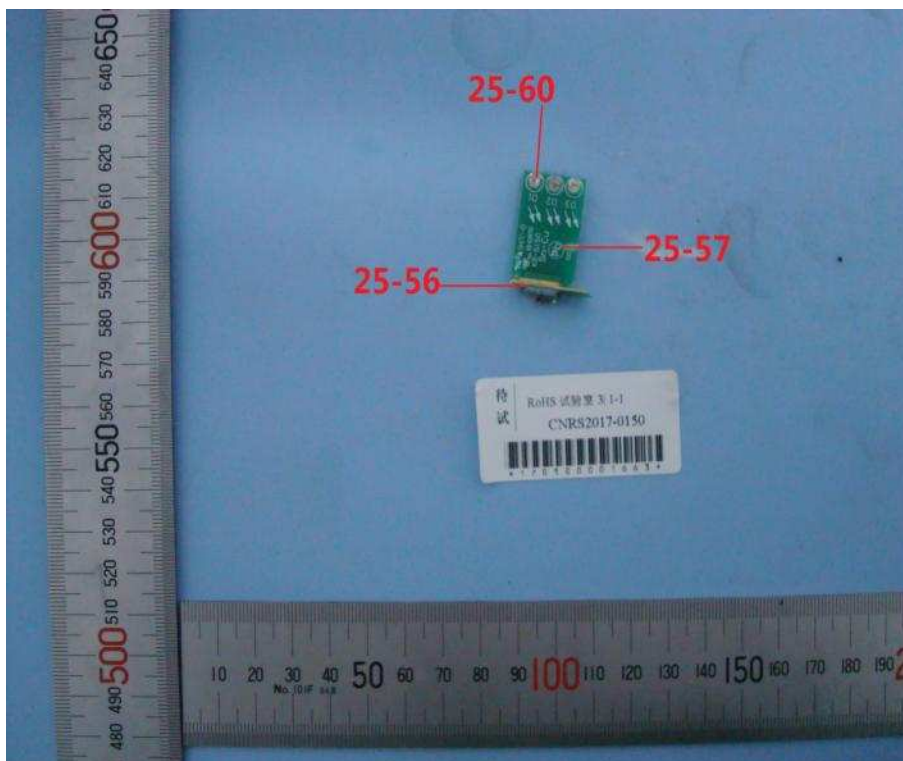
# Parts Photo



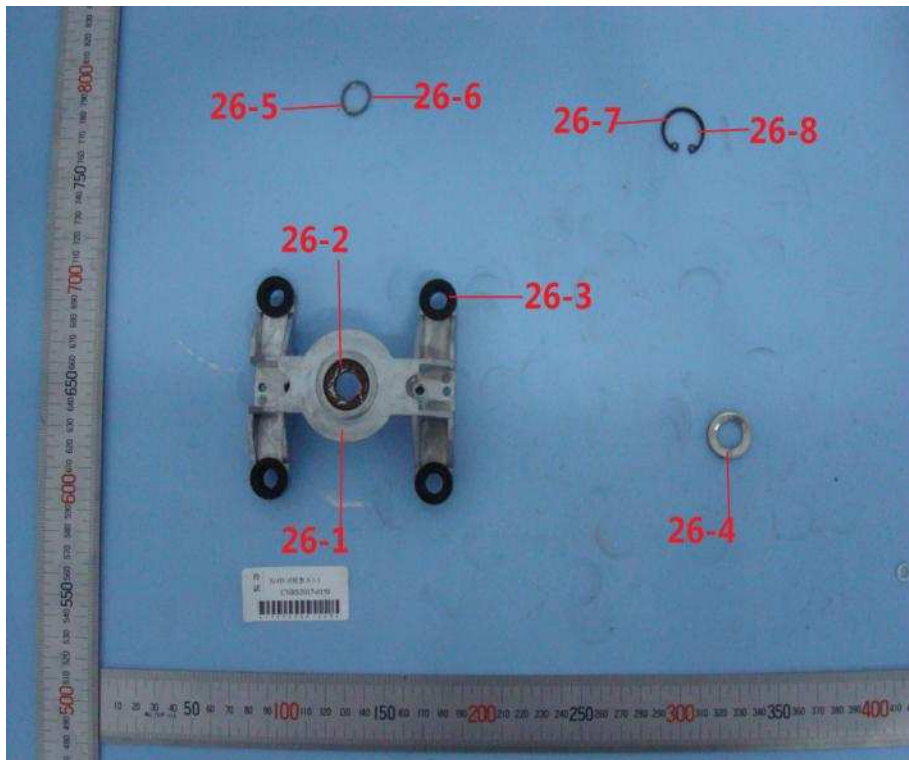
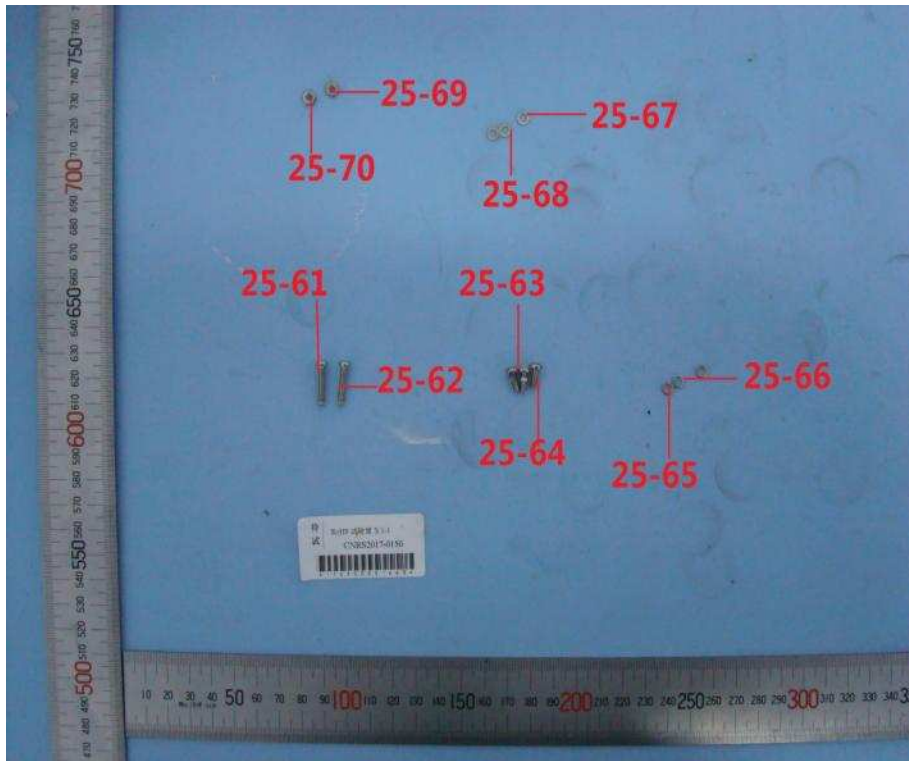
# Parts Photo



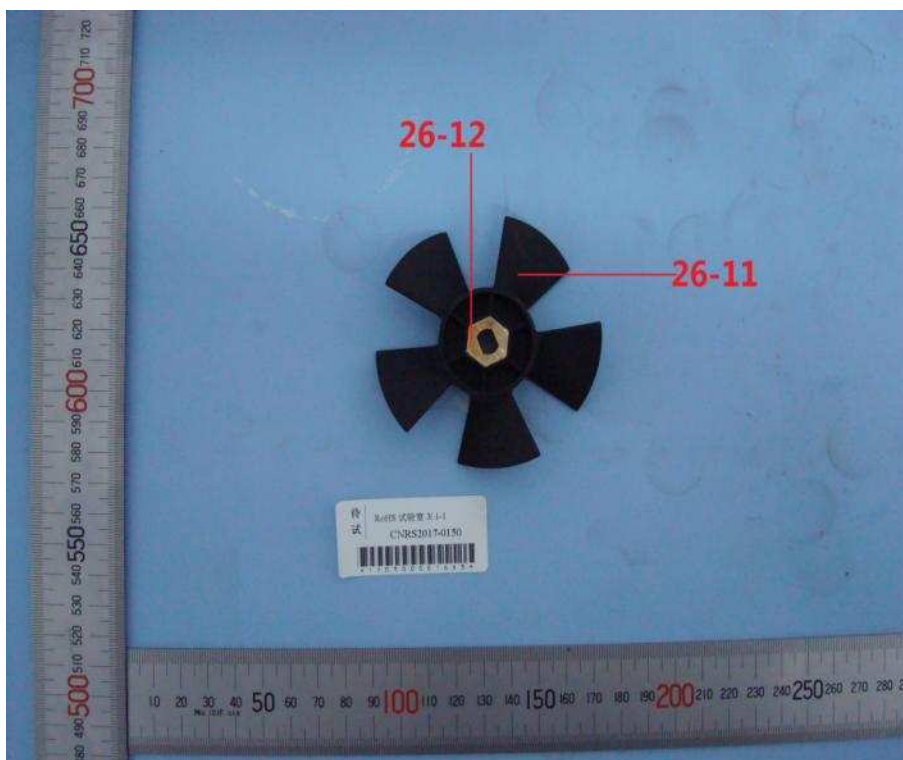
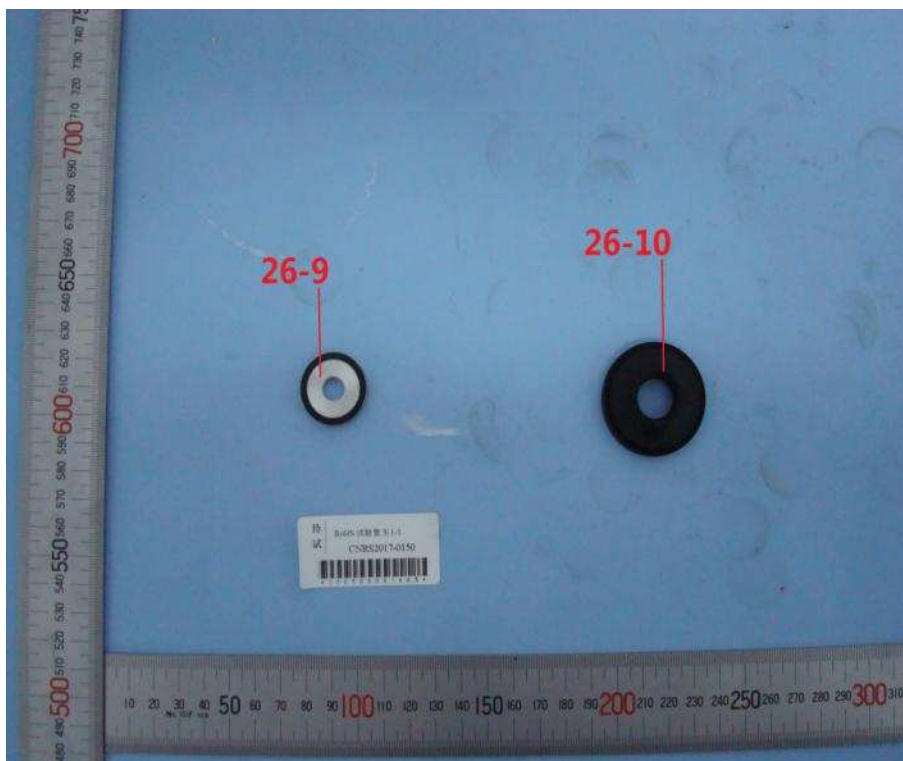
# Parts Photo



# Parts Photo

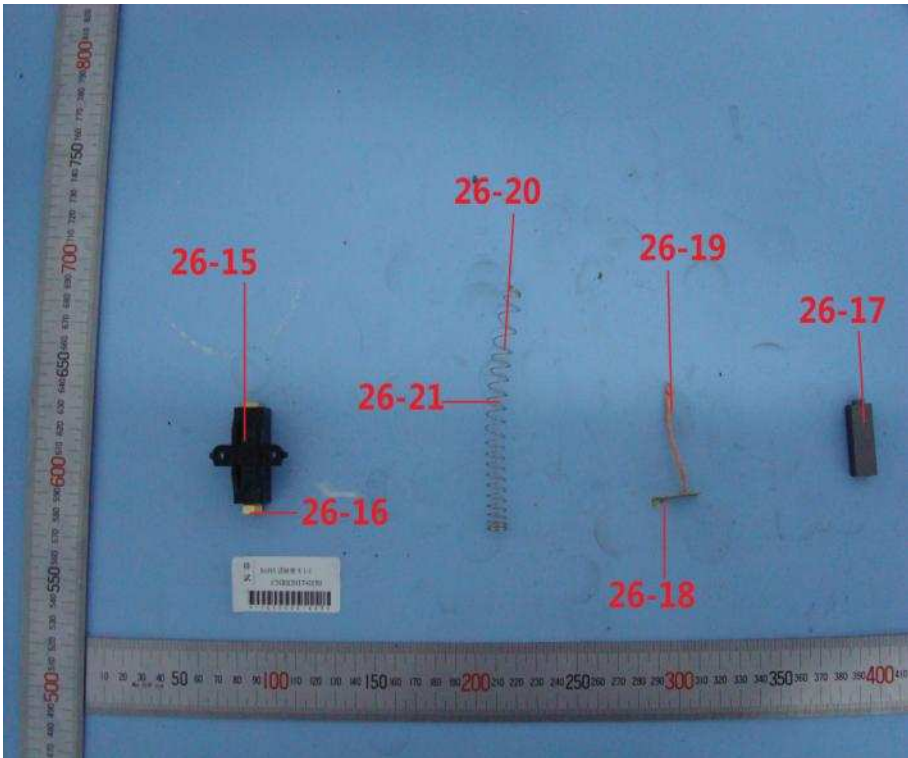
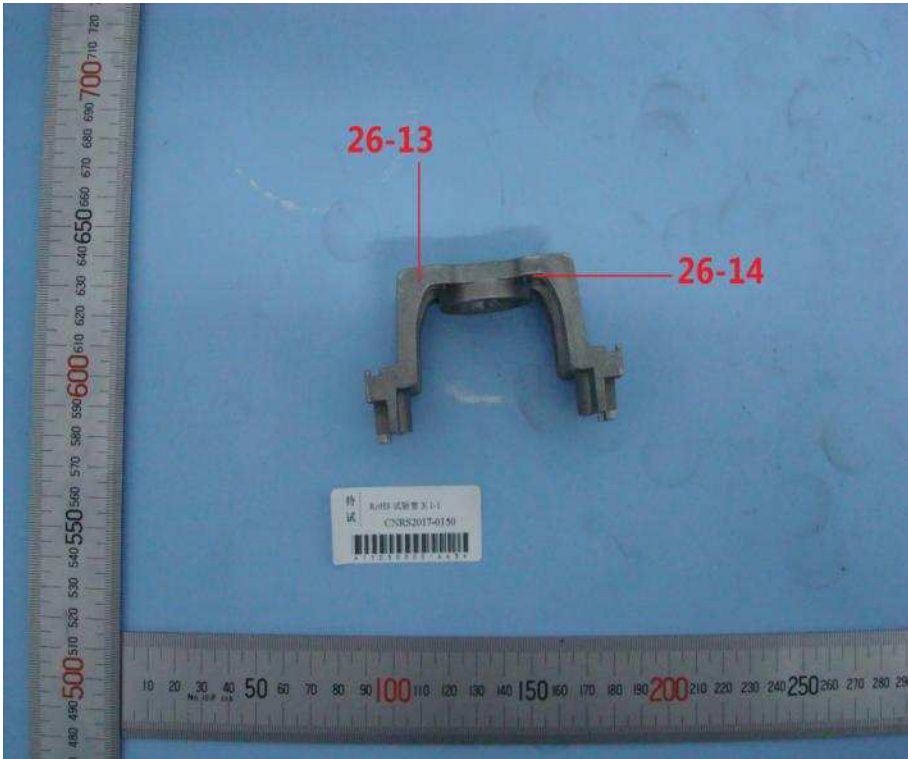


# Parts Photo

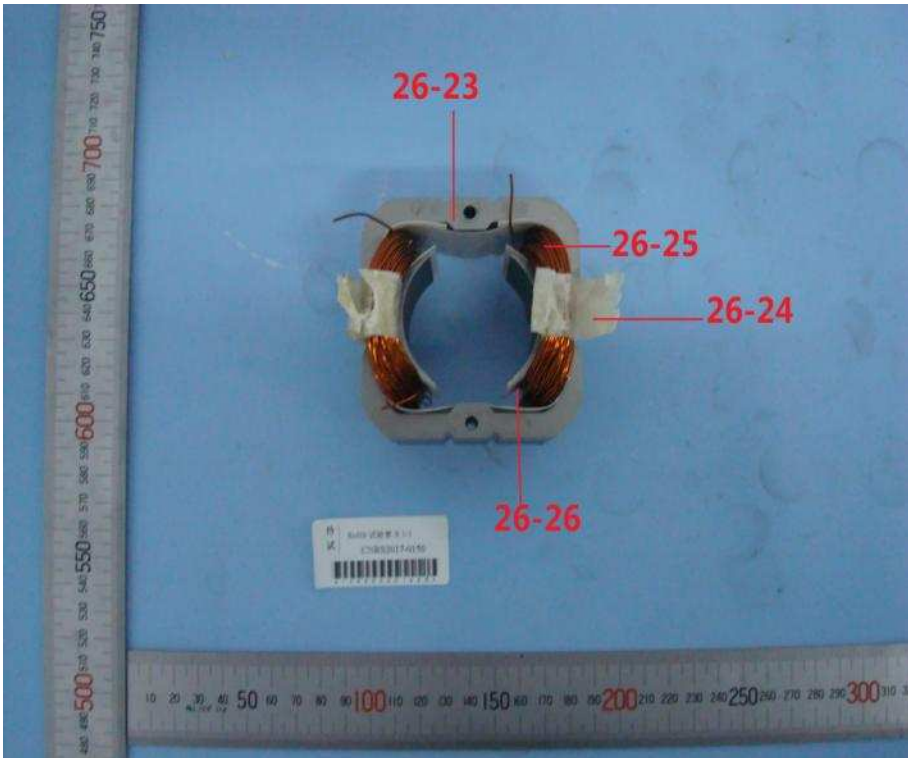
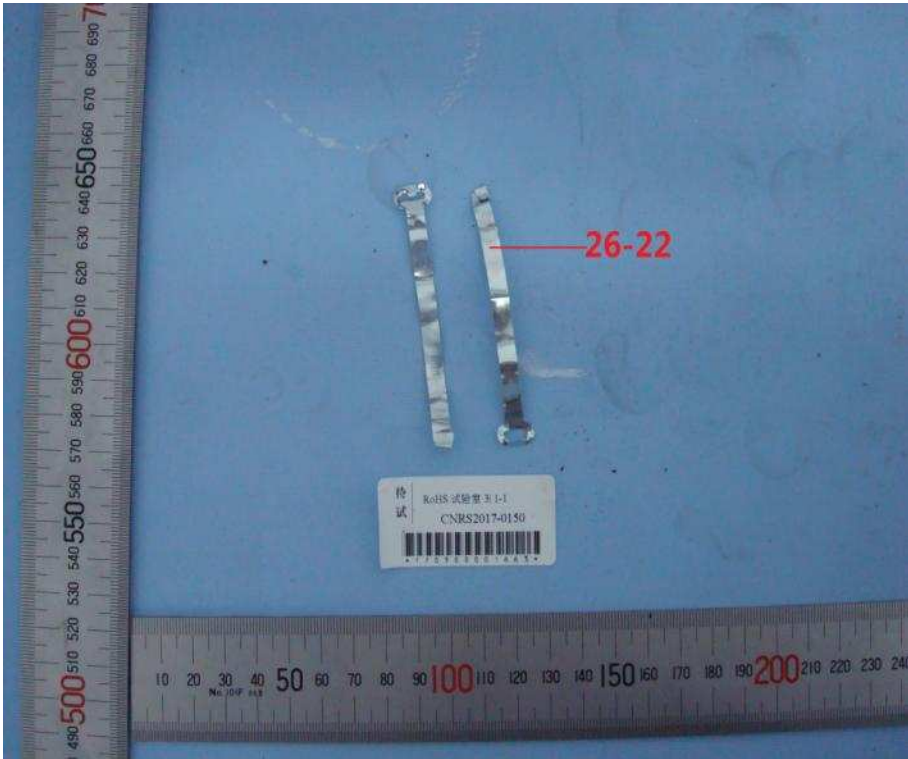




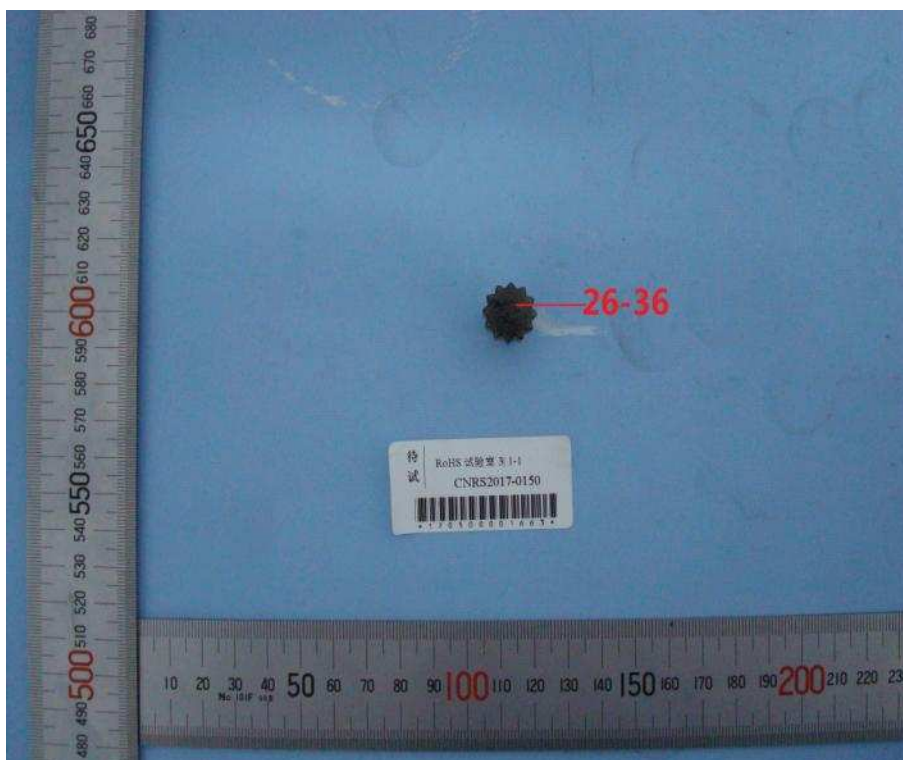
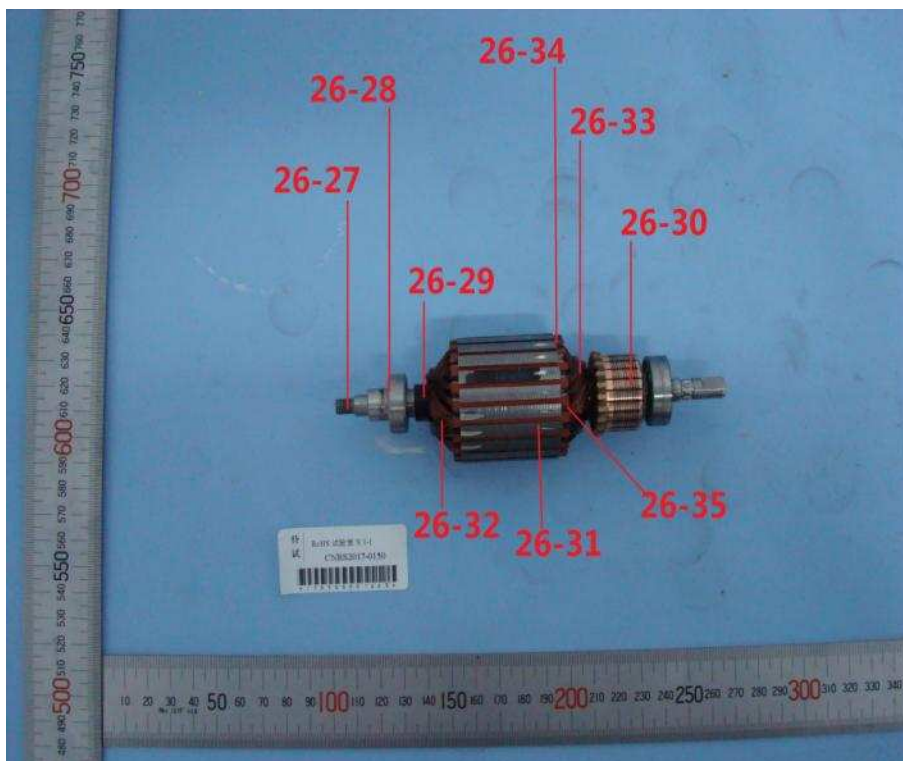
# Parts Photo



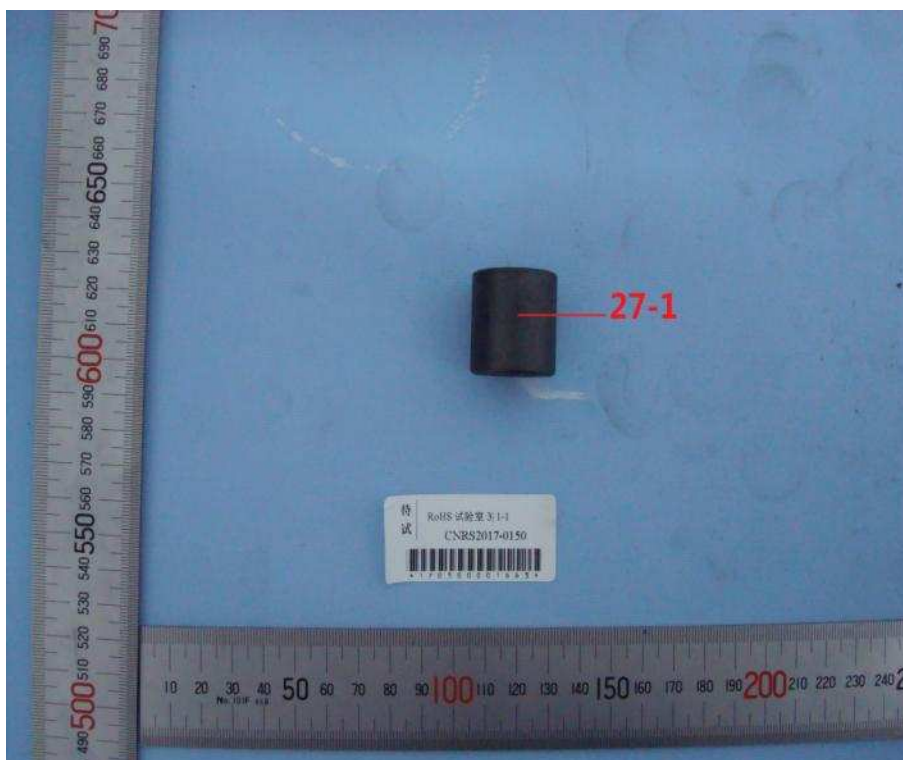
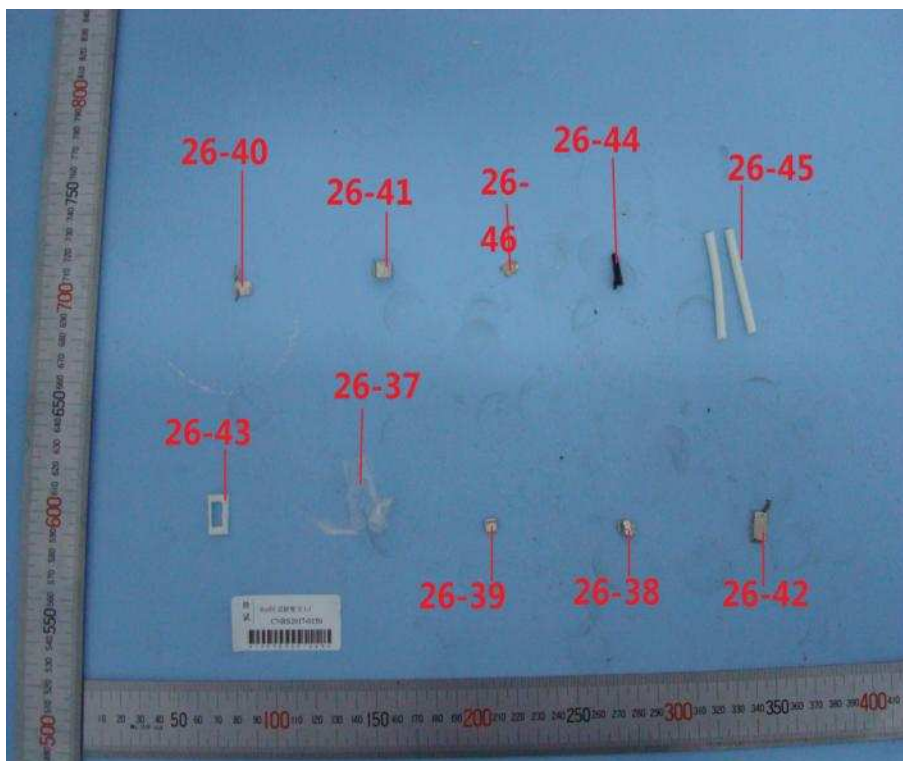
# Parts Photo



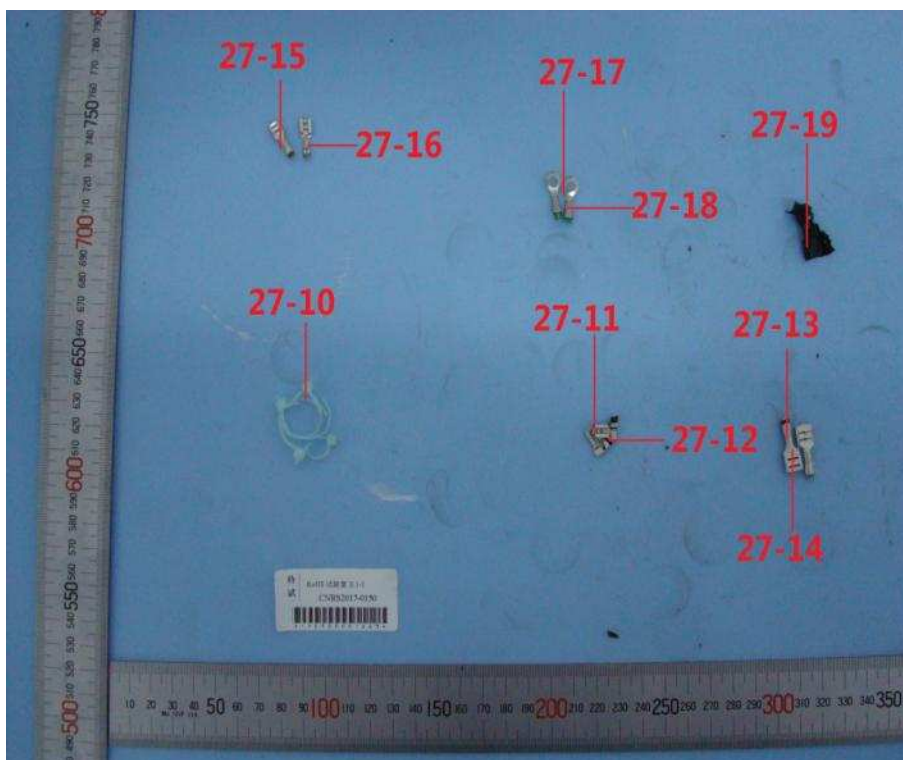
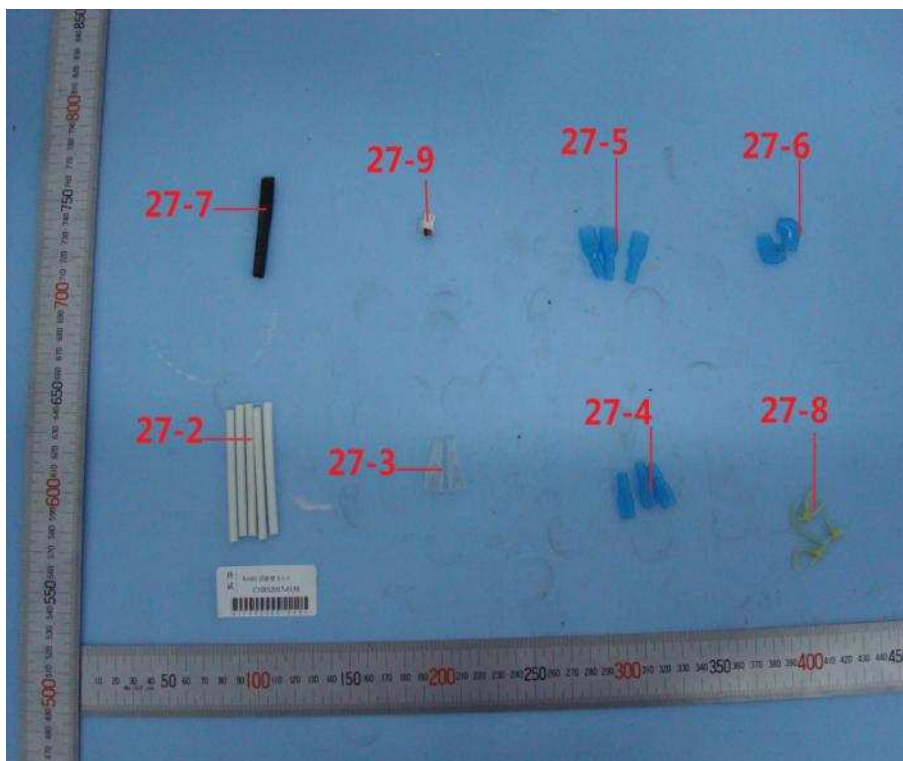
# Parts Photo



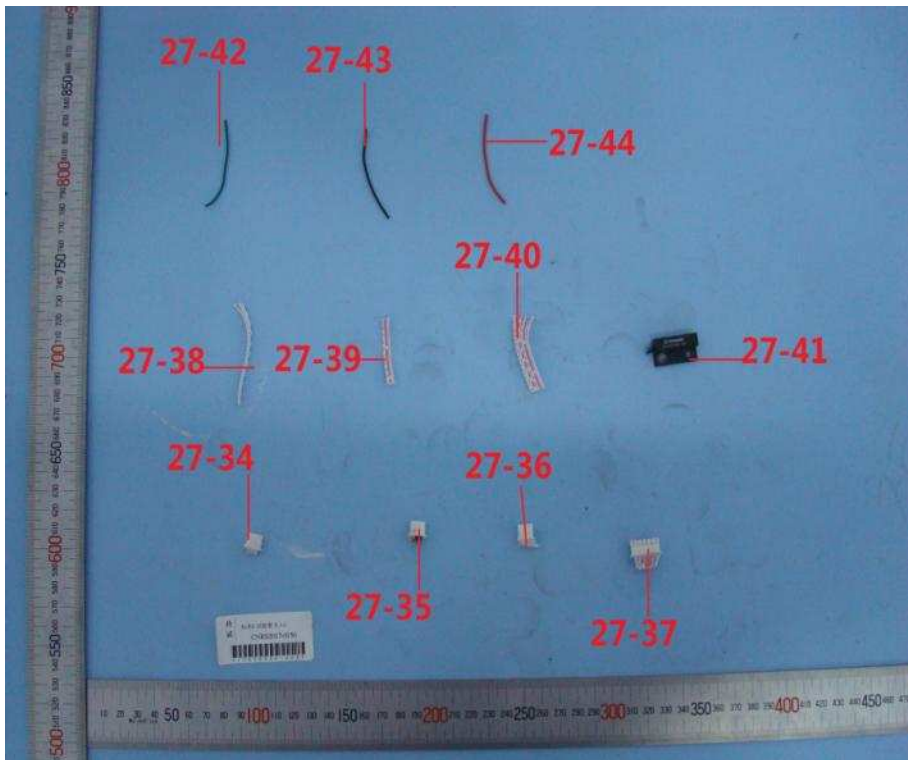
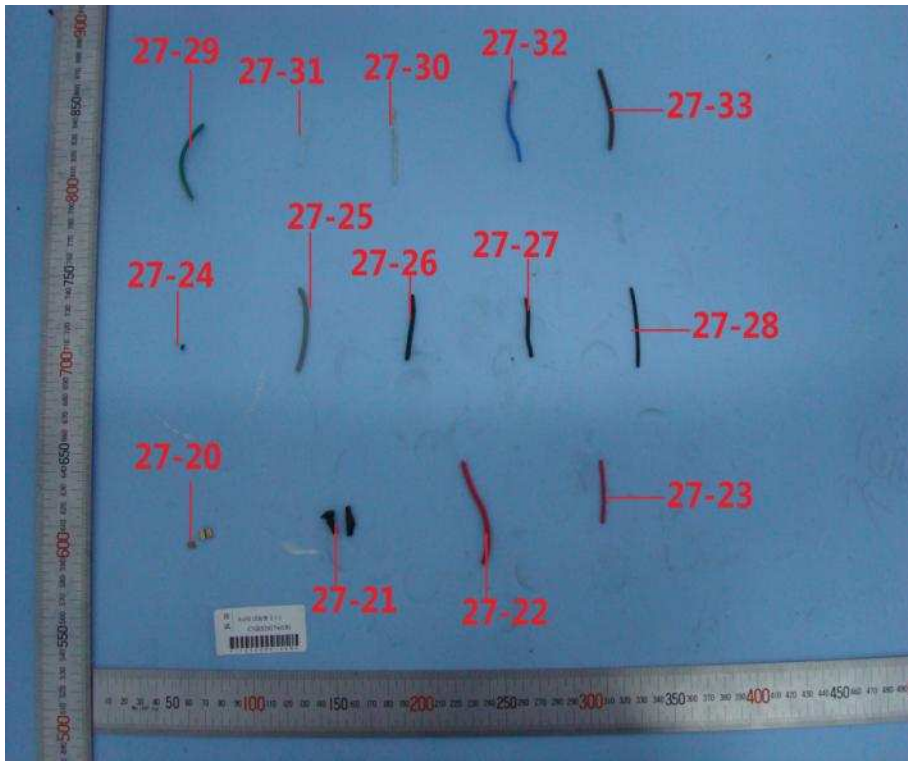
# Parts Photo



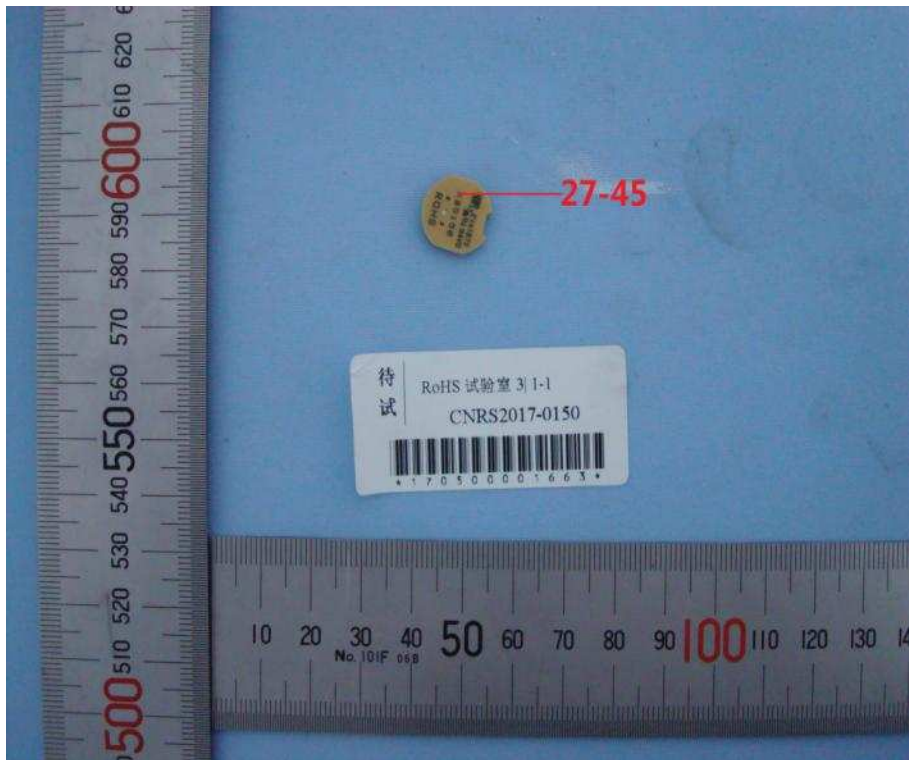
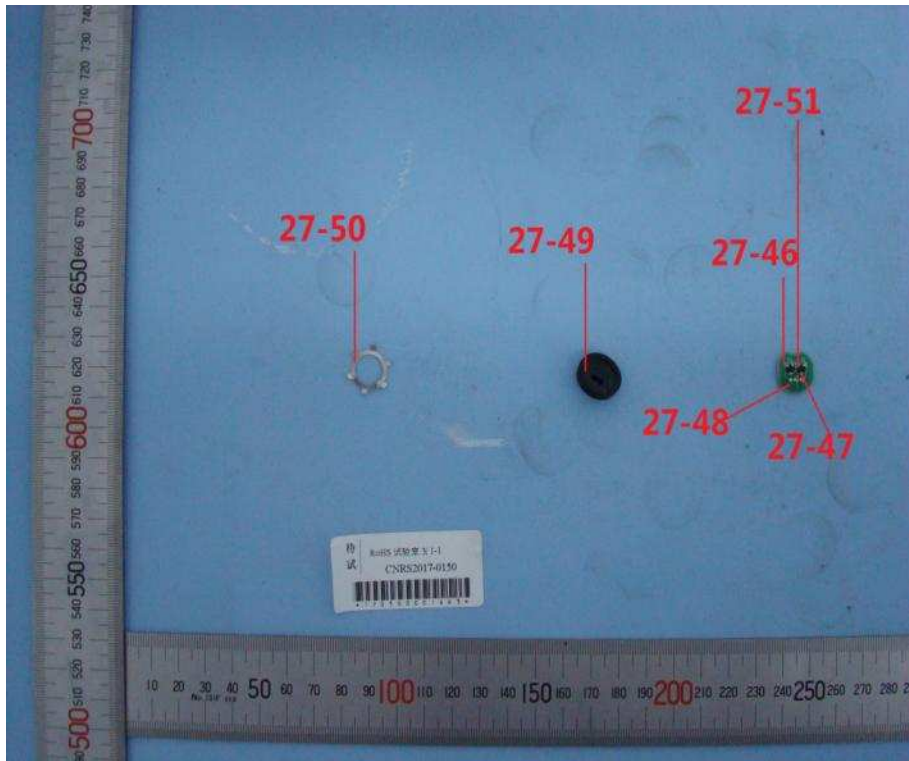
# Parts Photo



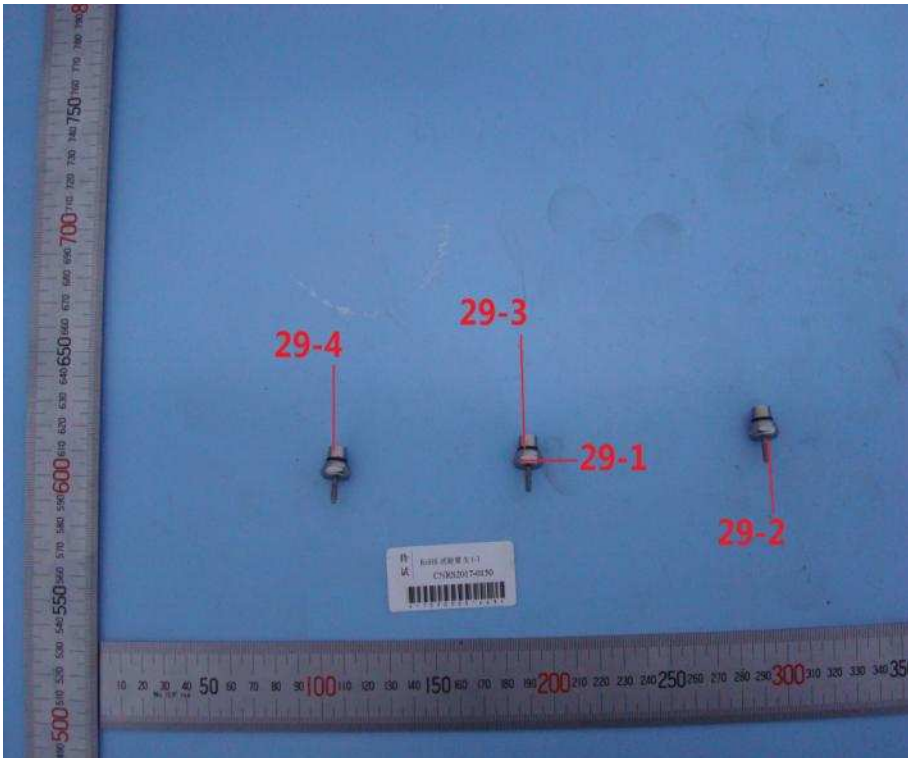
# Parts Photo



# Parts Photo

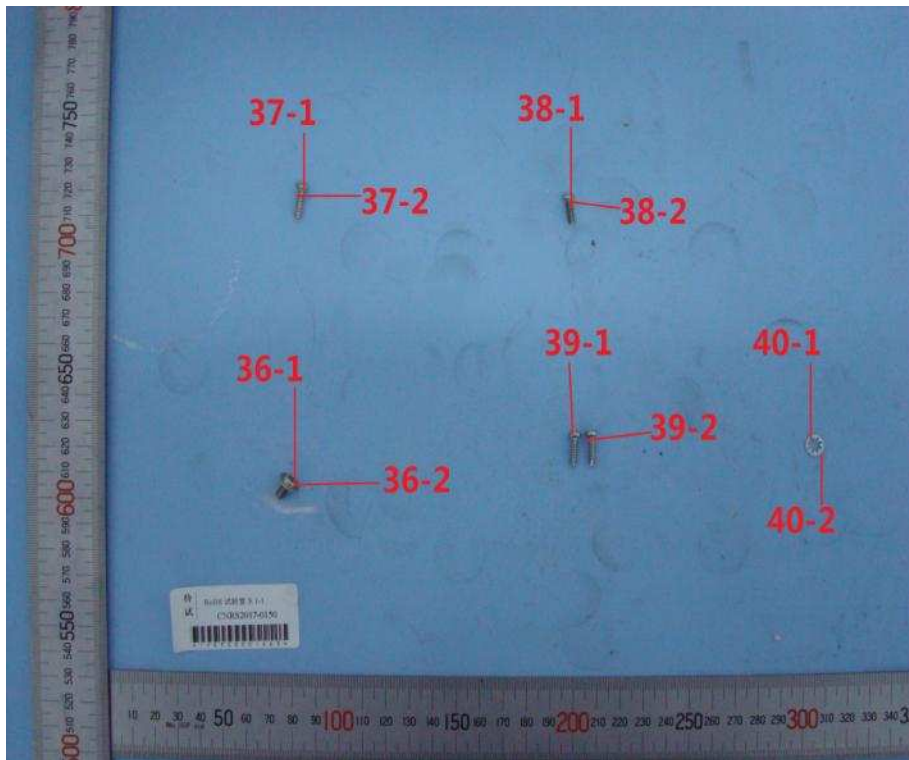
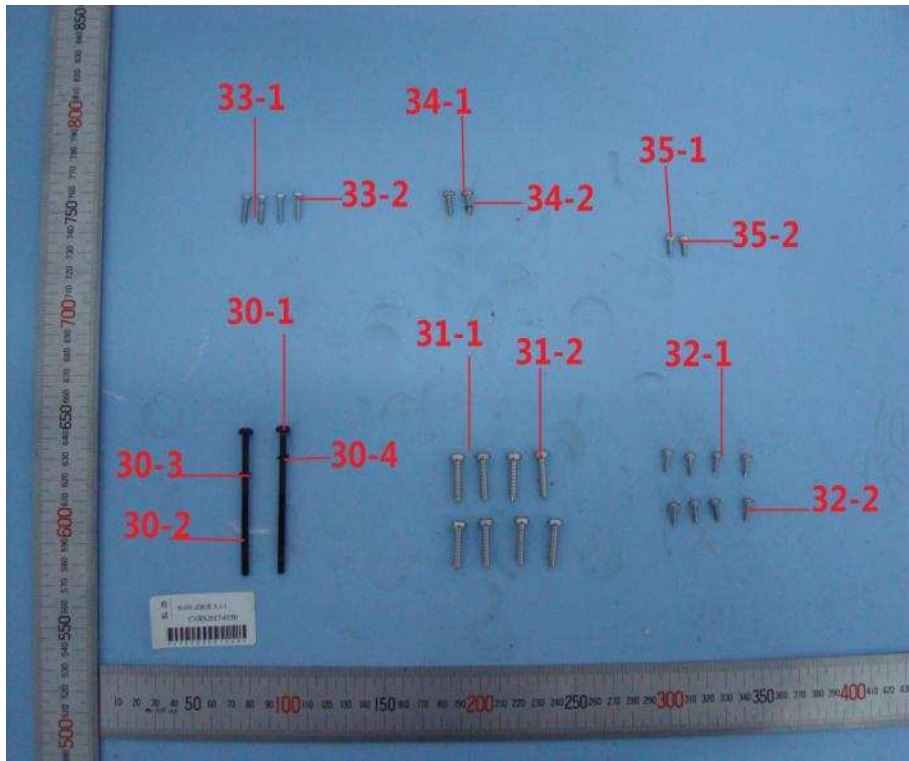


# Parts Photo

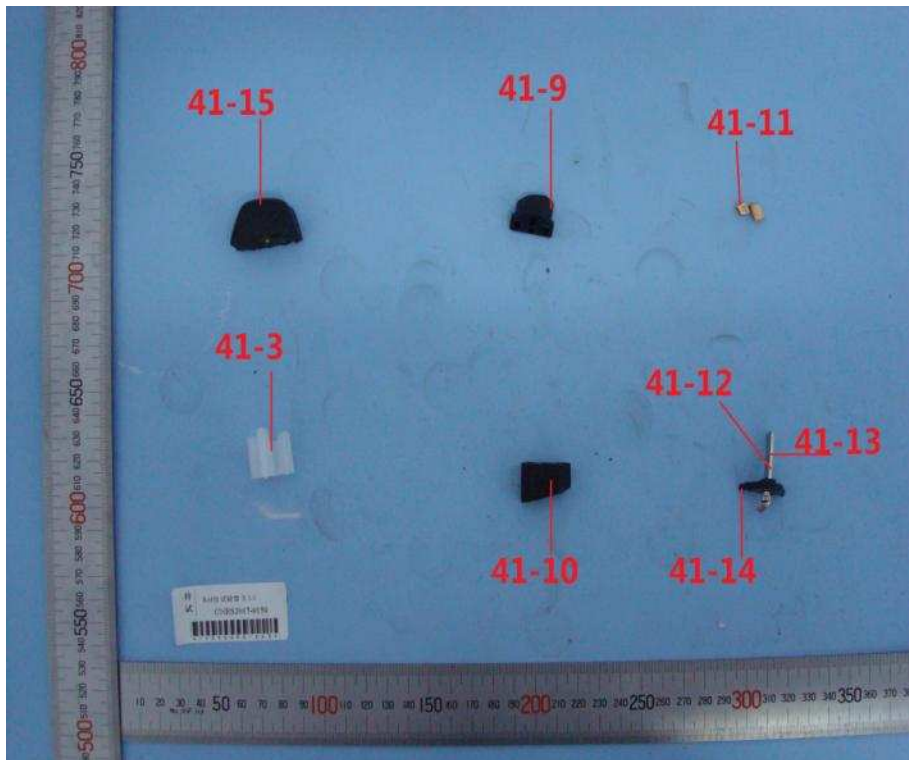
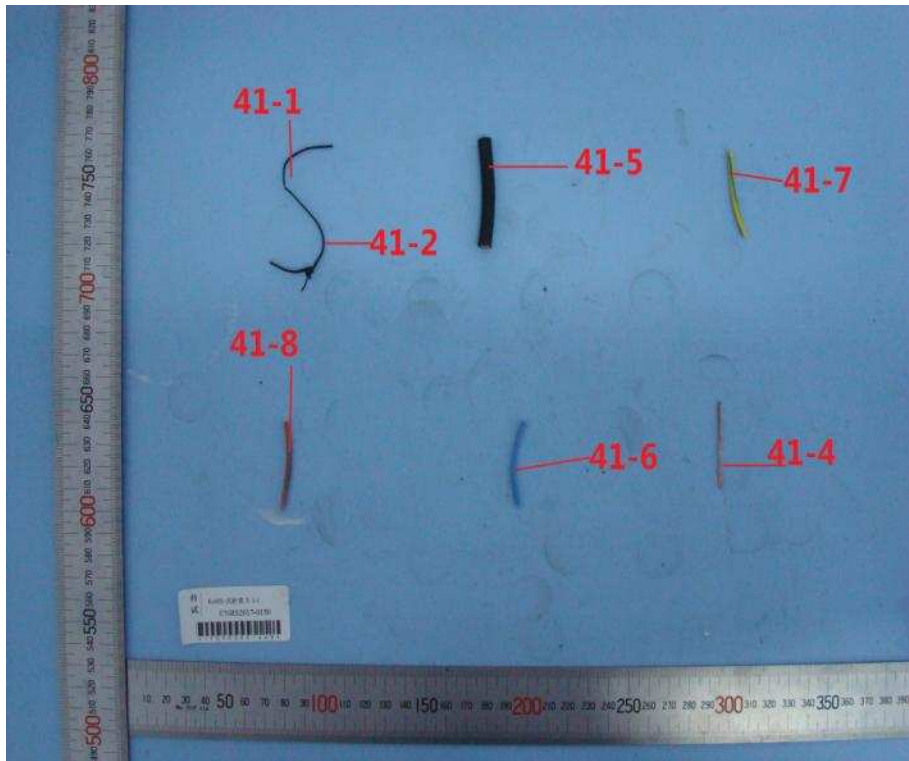




# Parts Photo



# Parts Photo



-----End of Report-----

本报告检测结果仅对所检样品负责。报告无检验单位印章无效。未经本单位书面同意，不得部分复制本报告。报告涂改无效。对检验报告若有异议，应于收到报告之日起十五日内向检验单位提出。

The test results presented in this report relate only to the object tested. The test report is invalid without the official stamp of CVC. This report shall not be reproduced, except in full, without the written approval of the issuing testing laboratory. The test report is invalid if altered. Objections to the test report must be submitted to CVC within 15 days.

## 威凯检测技术有限公司

### Vkan Certification & Testing Co., Ltd

地址：中国广州市科学城开泰大道天泰一路 3 号（510663）

Address: No.3, Tiantaiyi Road, Kaitai Avenue, Science City, Guangzhou P. R. China (510663)

电话(Tel): +86-20-32293888 传真(FAX): +86-20-32293889

E-mail: [office@cvc.org.cn](mailto:office@cvc.org.cn) <http://www.cvc.org.cn>